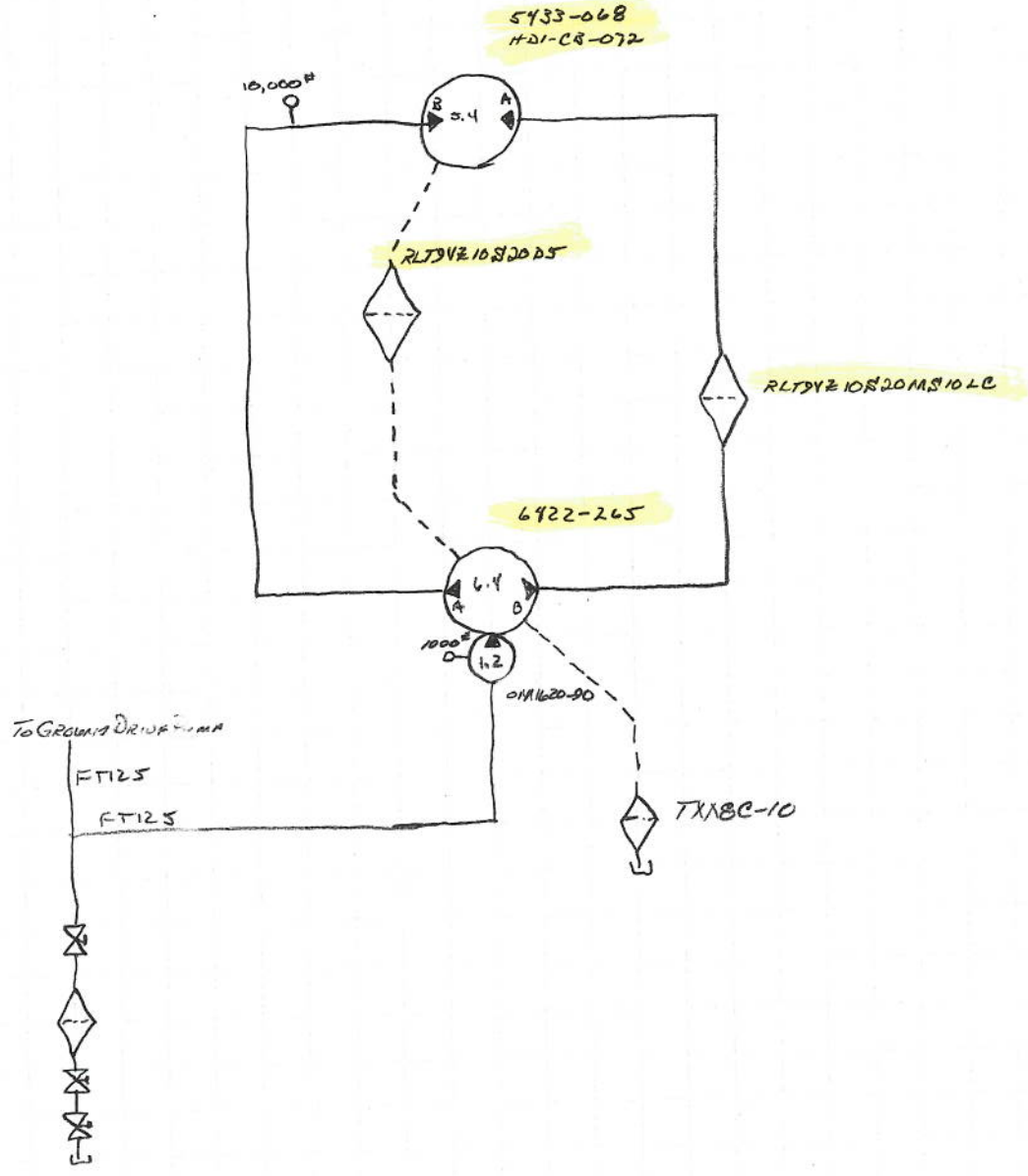


Downey

#08030

4RSPH $\frac{1}{65}$ " AH

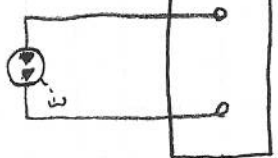
6/30/08
#08036
DOWNEY
415PH-65LAH



6/30/08
#08030
DOWNEY
HRSRH-65LAH

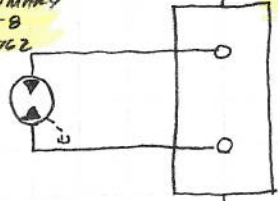
LEFT PRIMARY
112-105B
28-006-5162

DTS-8811



RIGHT PRIMARY
112-105B
28-006-5162

DTS-8811

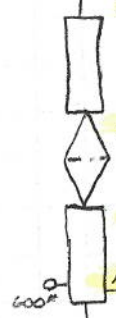


DTS-7005-2

RLT2VZ10F20D5

DTS-7005-2

RV5-10-B-0-3



5000#

5000#

DTS-2809



TX18C-10



FT125
FT100 To Secondary Pump

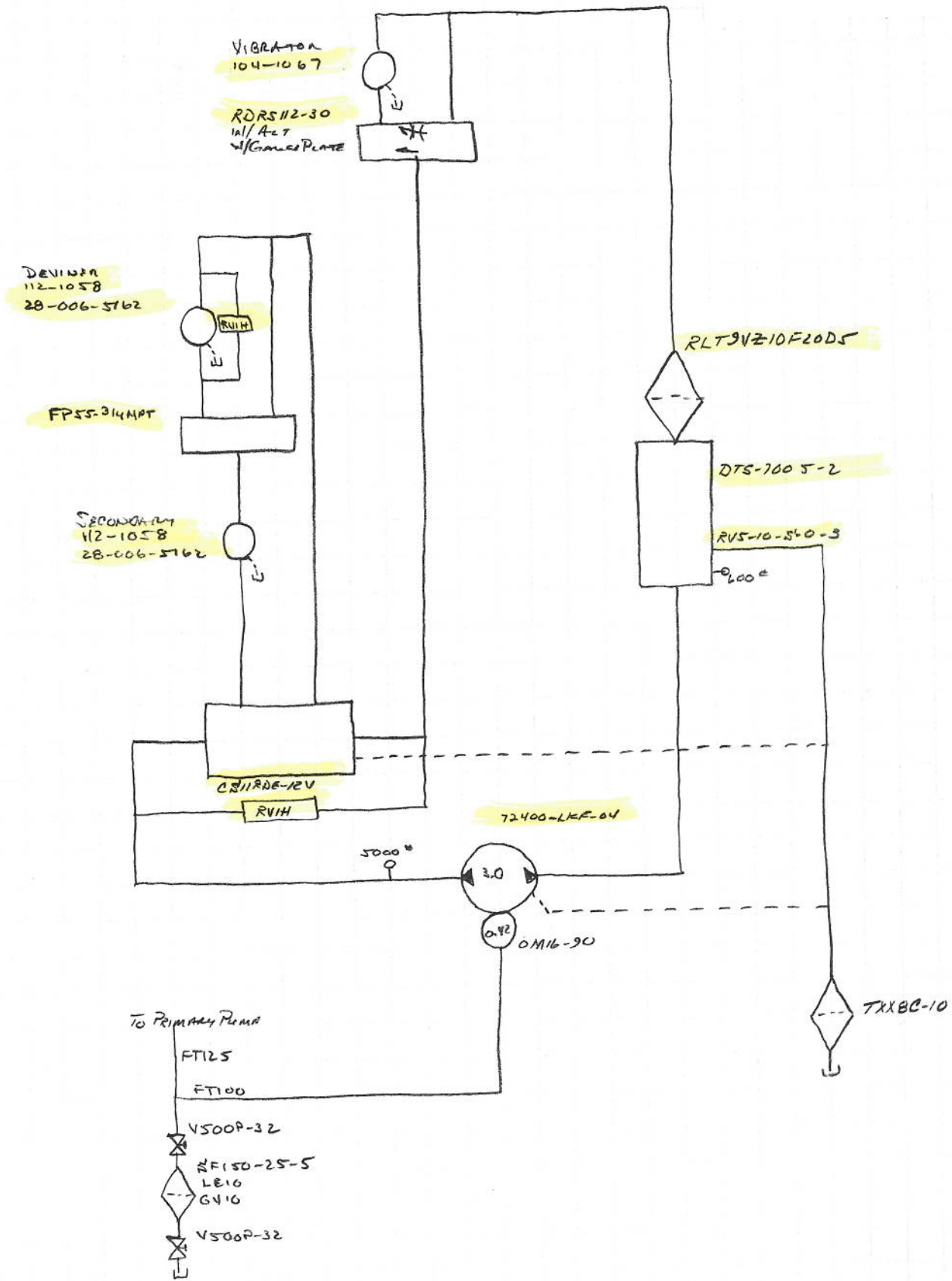
V500P-32

SF150-25-5
LE10
GV10

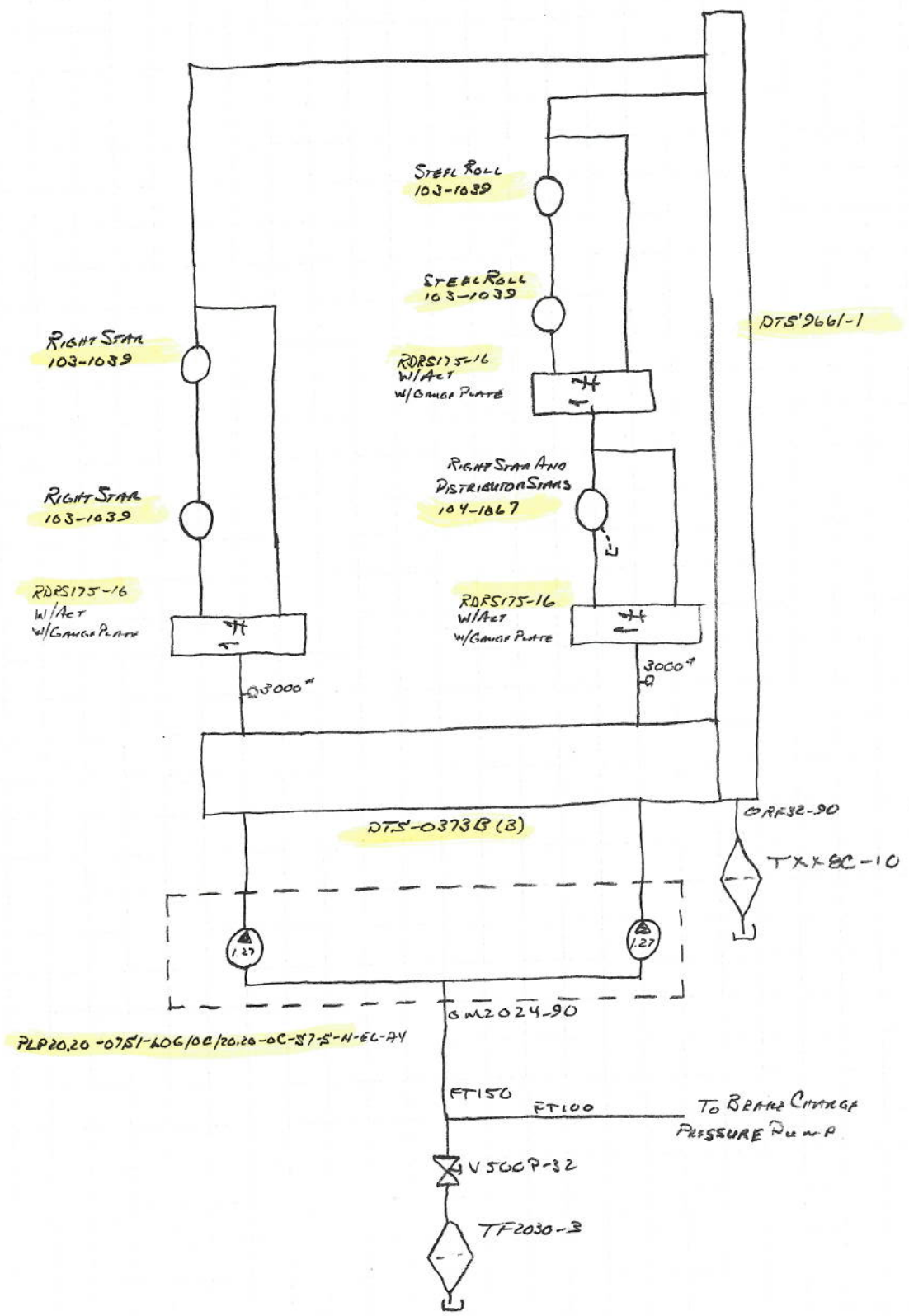
V500P-32



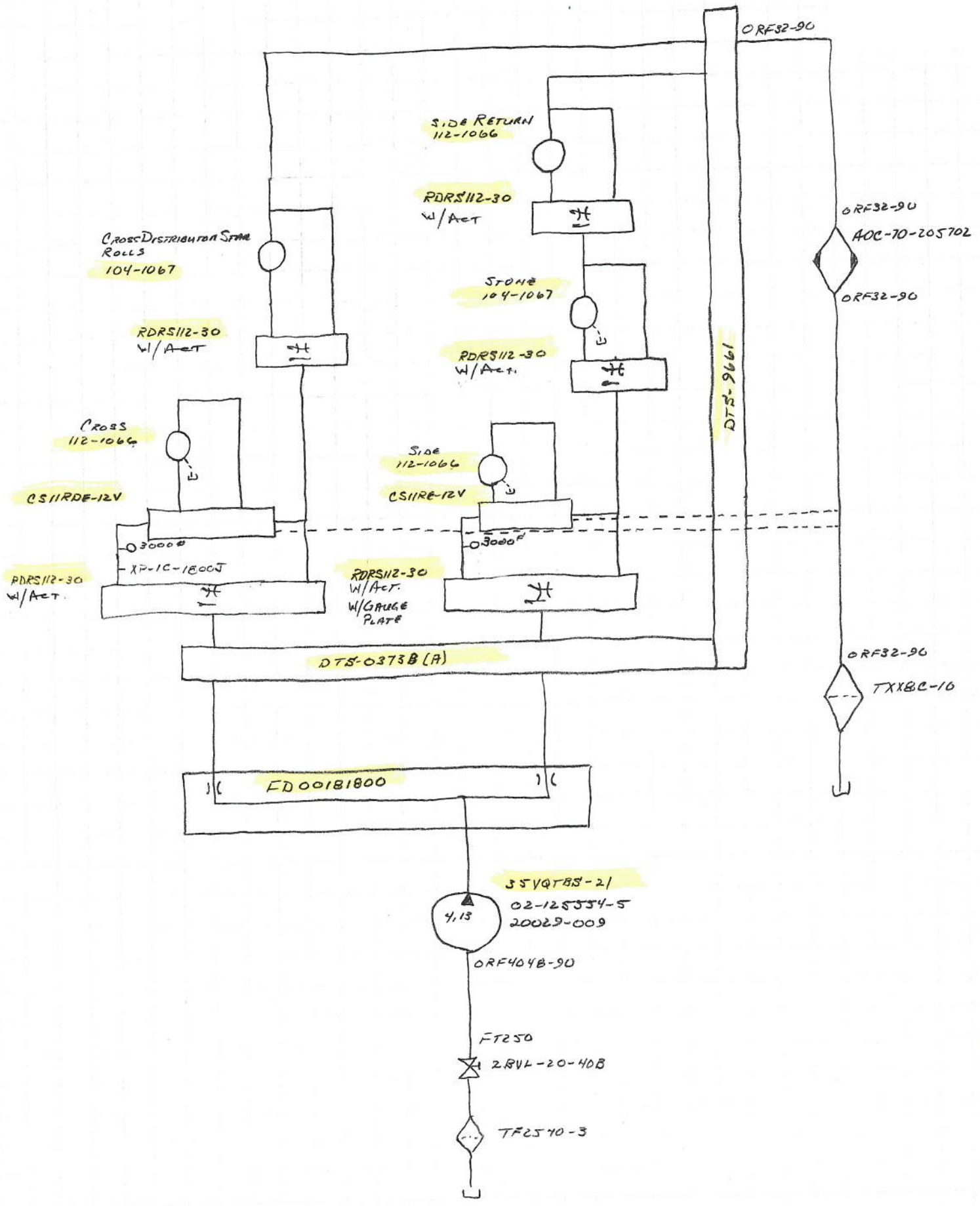
6/30/08
#0B030
DOWN KEY
4RS0A-65LAA



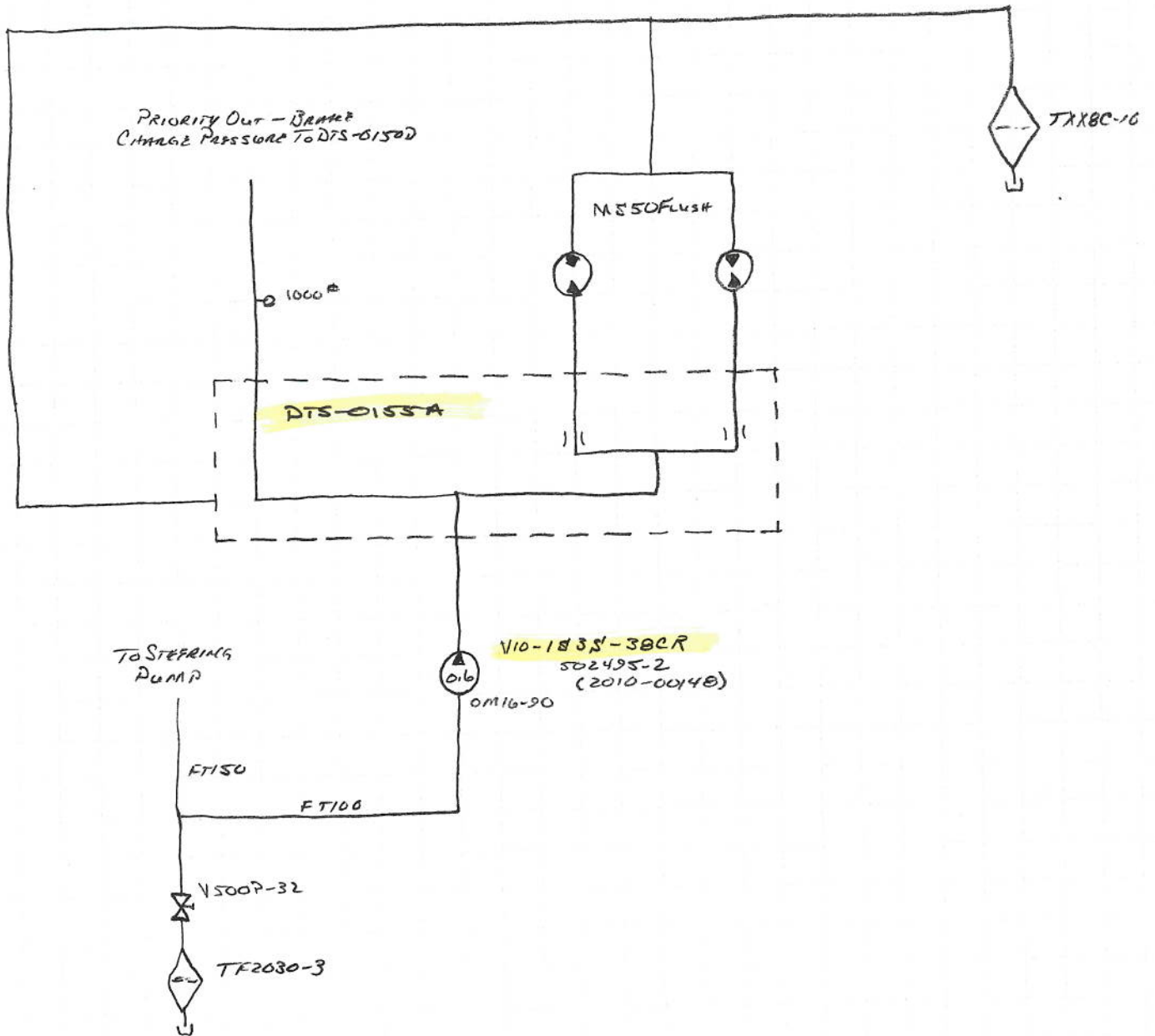
4/30/08
#08030
DOWNEY
HRS PA-65LAN



6/30/08
#08036
Downey
4R3PH-65LAN

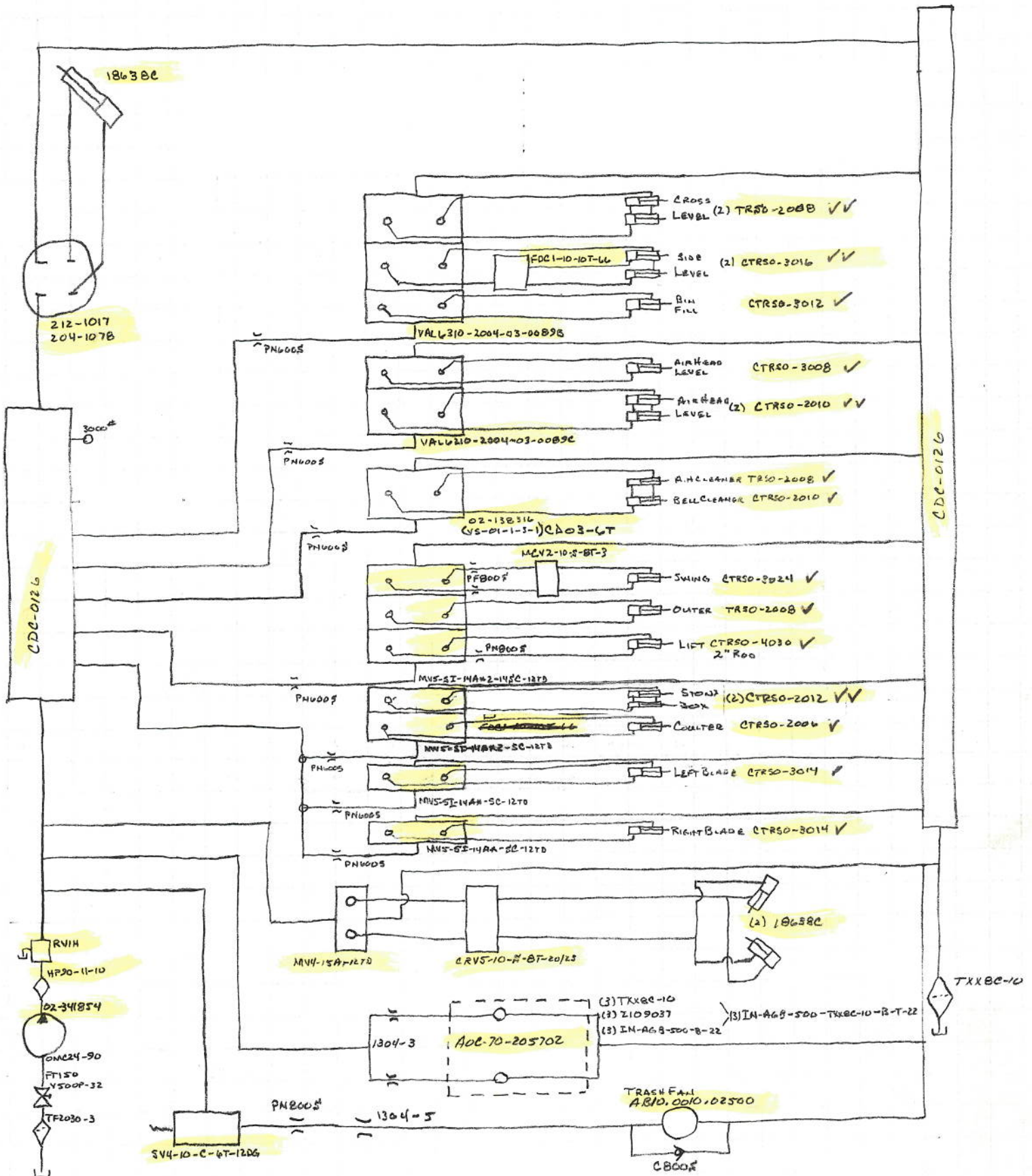


4/30/08
#08030
Doxin
4RSPH-65LPH

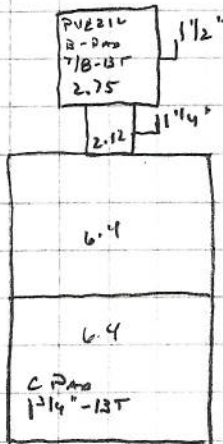


STEERING / VALVE BANK CIRCUITS

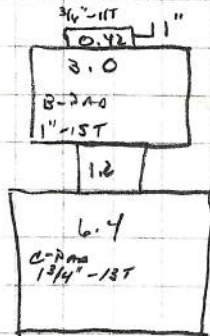
6/30/08
 E08030
 DOWNHAY
 4KSPH-65LAAH



- | | | | | |
|--|---|--|---|--|
| <p>④</p> <p>TF2540-3</p> <p>2 1/2" 90° Steel</p> <p>2 1/2" Cln N/A</p> <p>2BV220-40B</p> <p>FT250</p> <p>* 35VQTB3</p> | <p>③</p> <p>3" X 2" Bush</p> <p>2" Cln N/A</p> <p>VSDOP-32</p> <p>FT200</p> <p>ORF 32-90</p> <p>ZAP2215-25-5</p> <p>W43-32PK-2"</p> <p>2" 90° Steel</p> <p>2" Cln N/A</p> <p>VSDOP-32</p> <p>2" Cln N/A</p> <p>2" TEE 1/0</p> <p>X-2" X 1 1/4" Bush 0-2" 90° Steel</p> <p>FT125</p> <p>2" X 1 1/4" Bush</p> <p>FT125</p> <p>* T6.4/6.4</p> <p>* 6.4</p> | <p>③</p> <p>TF2030-3</p> <p>2" 90° Steel</p> <p>2" Cln N/A</p> <p>VSDOP-32</p> <p>2" Cln N/A</p> <p>VSDOP-32</p> <p>X-2" X 1 1/2" Bush</p> <p>FT150</p> <p>2" X 1 1/2" Bush</p> <p>* TRIP. Comm. Pump</p> <p>0-2" 90° Steel</p> <p>2" X 1 1/2" Bush</p> <p>FT150</p> <p>* TRIP. Comm. Pump.</p> <p>* V10</p> | <p>③</p> <p>TF2030-3</p> <p>2" 90° Steel</p> <p>2" Cln N/A</p> <p>VSDOP-32</p> <p>2" Cln N/A</p> <p>2" TEE 1/0</p> <p>X-2" X 1 1/2" Bush</p> <p>FT150</p> <p>* TAN. PLP</p> <p>0-2" 90° Steel</p> <p>2" X 1" Bush</p> <p>FT100</p> <p>* V10</p> | <p>④</p> <p>1" X 2" Bush</p> <p>2" 90° Steel</p> <p>2" Cln N/A</p> <p>VSDOP-32</p> <p>2" X 1 1/2" Bush</p> <p>1 1/2" Cln N/A</p> <p>RF150-25-5</p> <p>1 1/2" Cln N/A</p> <p>2" X 1 1/2" Bush</p> <p>VSDOP-32</p> <p>2" Cln N/A</p> <p>2" TEE 1/0</p> <p>X-2" X 1 1/4" Bush</p> <p>FT125</p> <p>* TAN. 3.0/3.0</p> <p>0-2" X 1" Bush</p> <p>FT100</p> <p>* SINGLE 3.0</p> |
|--|---|--|---|--|



L.R.



L.L.

L.R. TANDEM 6.4
DVE214

L.L. 6.4
3.0

T.R. 35VQTB3

TRIP. COMM. PUMP

TL - TANDEM 3.0/3.0

TANDEM PLATO

ENGINE - V10

GROUND DRIVE

STEERING

AIR HEAD

SECONDARY

CROSS

SHOE

BIN FILL

BIN UNLOAD

LEFT SPAN TABLE

LEFT PRIMARY

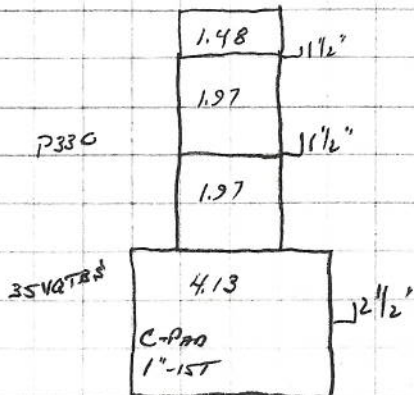
RIGHT PRIMARY

RIGHT SPAN TABLE

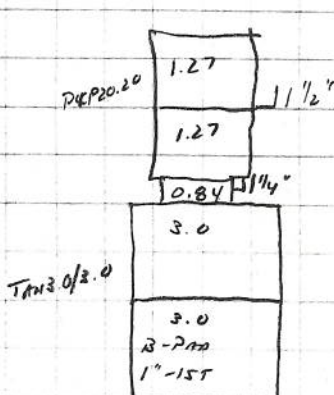
RIGHT SPAN TABLE DIST.

BRAND CHARGE PRESSURE

FLUSHING



T.R.



T.L.

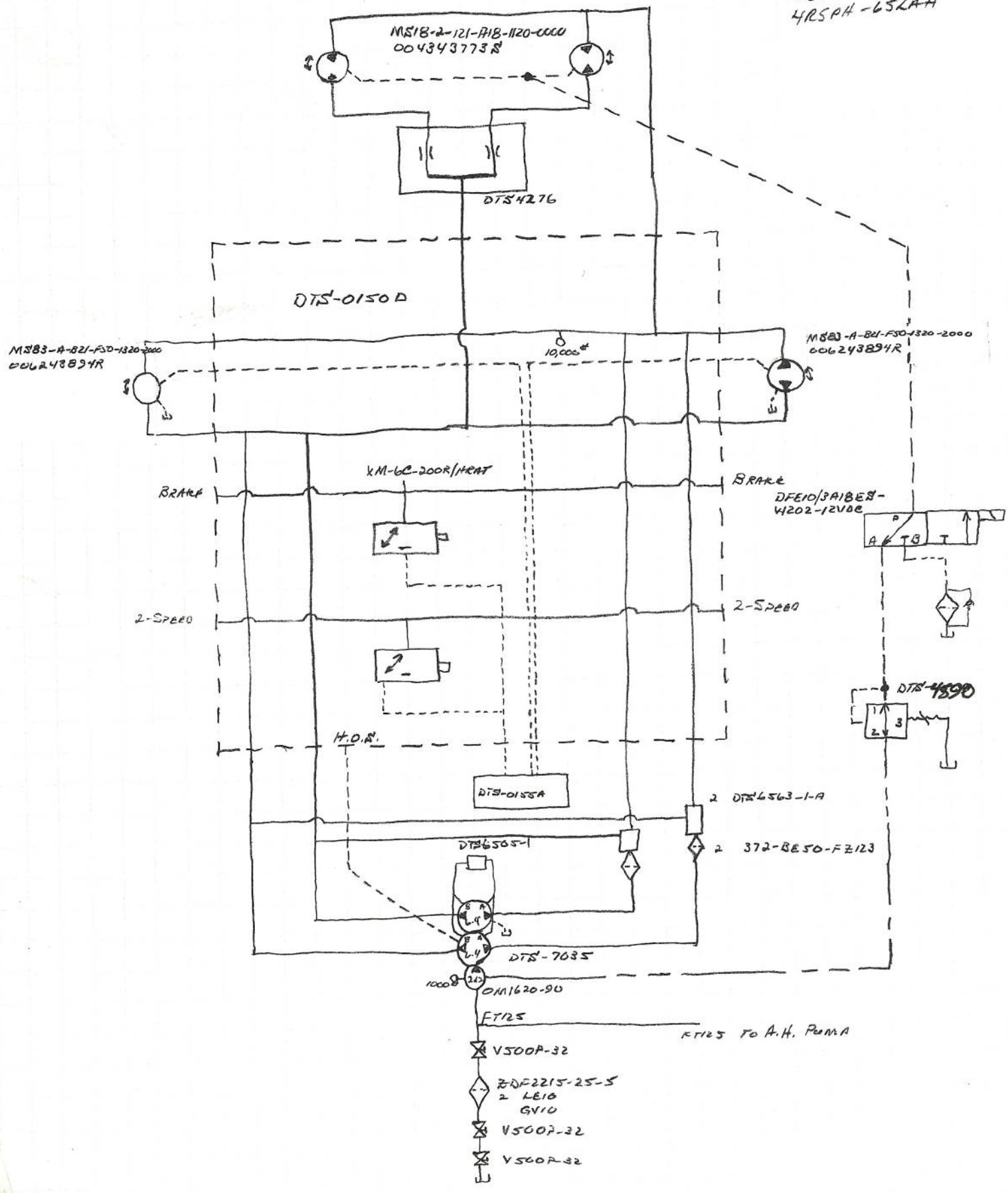
GEAR PRODUCTS - 4/HOLE

DP 49 / 19310 DRIVE PLATE

V10 0.6 1" 5/16-11T

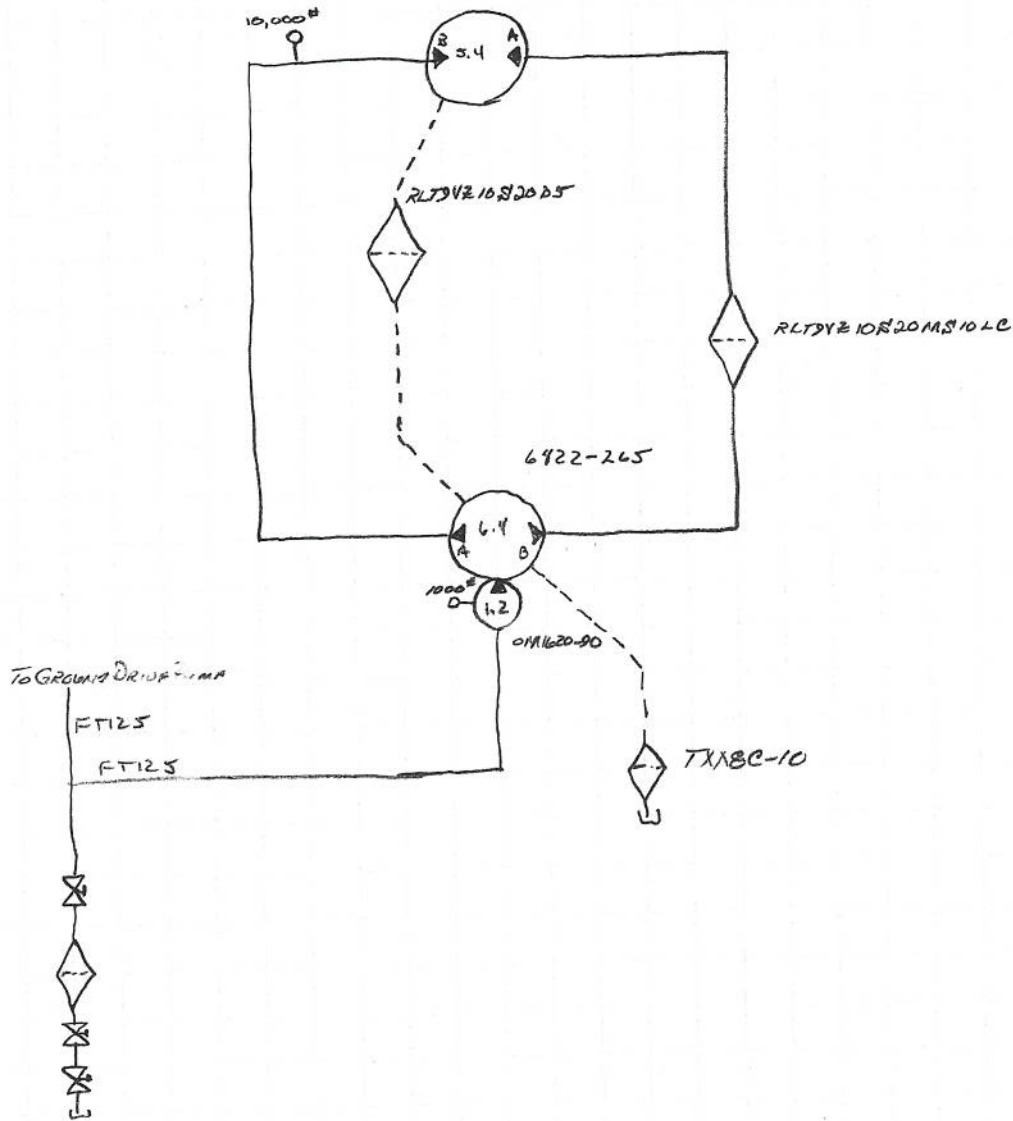
ENGINE - QS X-15-520 H.P.

6/30/08
 #08030
 Down 1129
 HRS PH - 65LAH



6/30/08
#08036
DOWNEY
415PH-65LAH

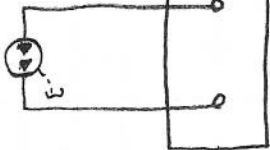
5433-068
HDI-CB-072



6/30/08
#08030
DOWNEY
NRSRA-65LAH

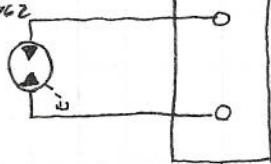
LEFT PRIMARY
112-1058
28-006-5162

DTS-8811



RIGHT PRIMARY
112-1058
28-006-5162

DTS-8811



5000#

DTS-2809



FTR5

F7100

V500P-32

SF150-25-5

LE10

GV10

V500P-32

600#

DTS-7005-2

RLTSVZ10F20P5

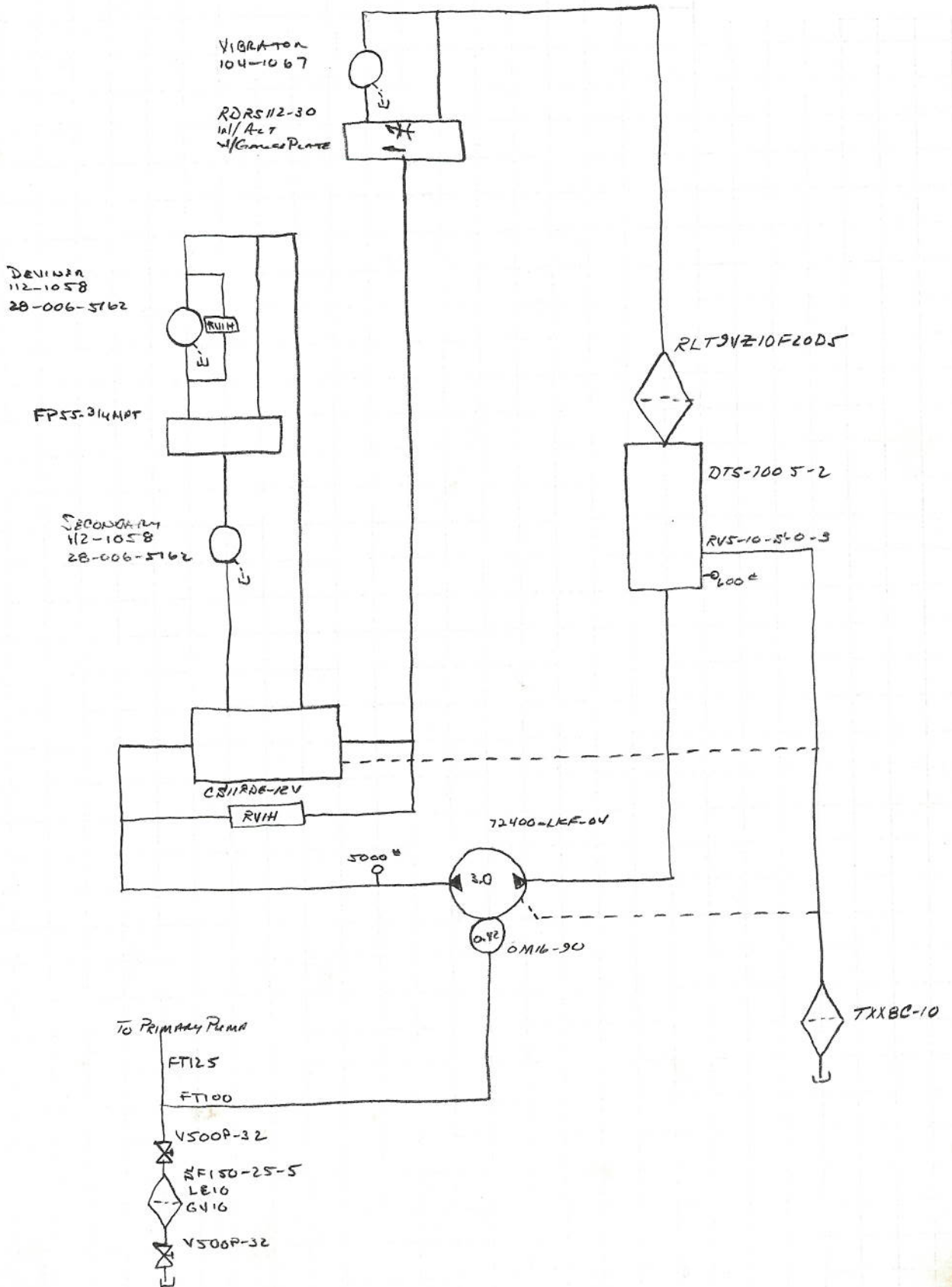
DTS-7005-2

RV5-10-S-0-3

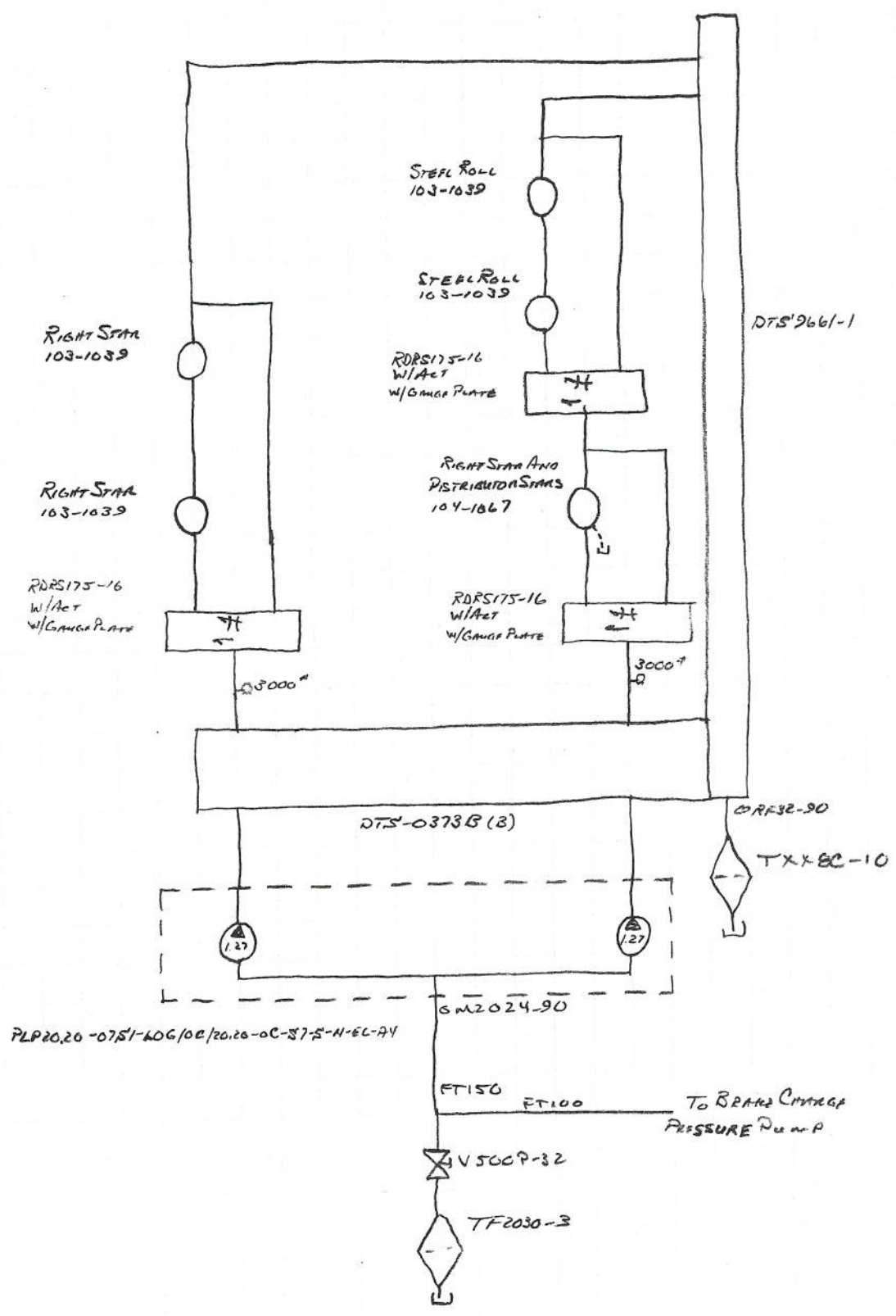
TX18C-10

To Secondary Pump

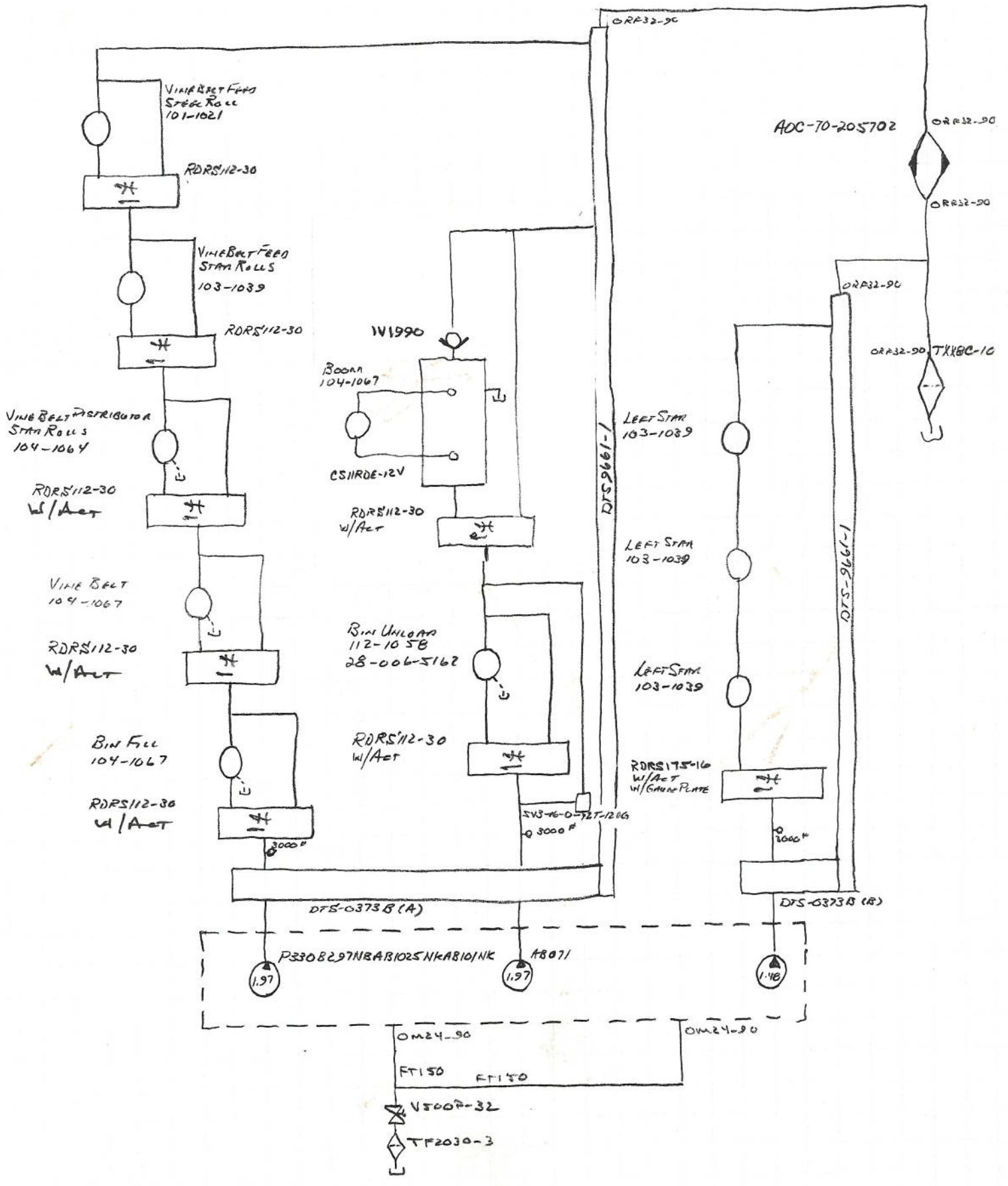
6/30/08
#08080
DOWN KEY
4RS0A-65LAH



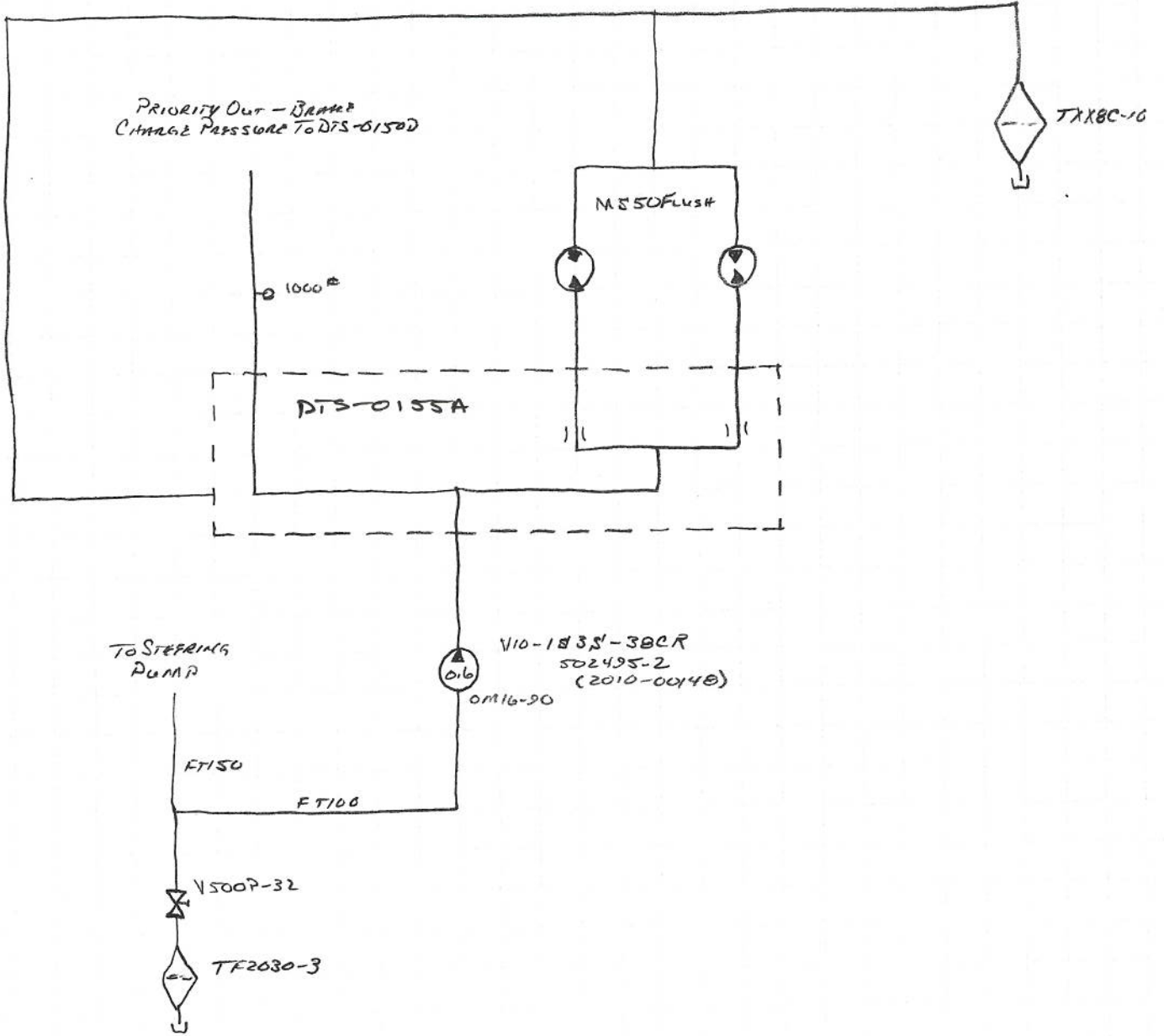
6/30/08
#08030
DOWNEY
4RSPA-65LAA



7/9/08 = 08030
 Downney Farms
 YRSAH-65LAH

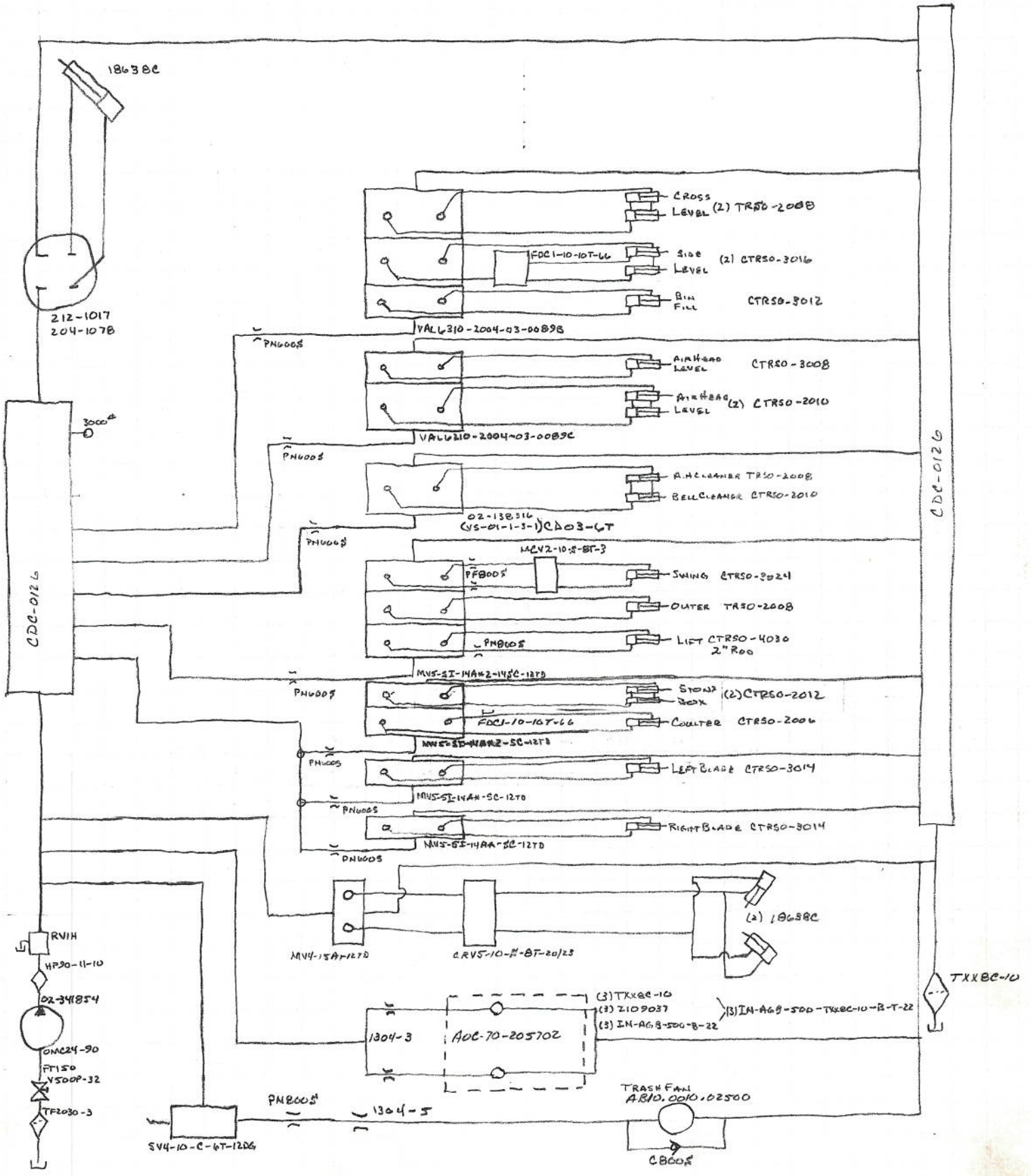


4/30/08
#08030
Down #4
4RSPH-65LAAH

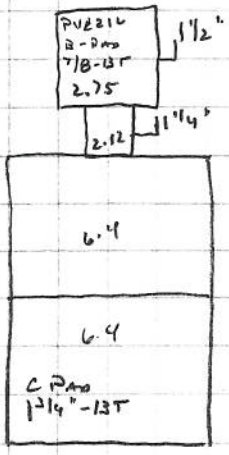


STEERING / VALVE BANK CIRCUITS

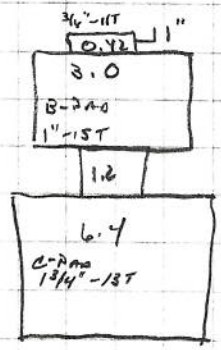
6/30/08
E08030
DOWNNEY
41804-65LAA



- 4"**
TF2540-3
2 1/2" 90° Steel
2 1/2" Ccs N/A
2BVL20-40B
FT250
* 3SVQTBSS
- 3"**
3" X 2" Bush
2" Ccs N/A
V500P-32
FT200
FT200
2" 90° Steel
W43-32PK
ZAP2215-25-5
W43-32PK-2"
2" 90° Steel
2" Ccs N/A
V500P-32
2" Ccs N/A
2" TEE x 0
X- 2" X 1/4" Bush 0-2" 90° Steel
FT125
* T. 4/6.4
- 3"**
TF2030-3
2" 90° Steel
2" Ccs N/A
V500P-32
2" Ccs N/A
2" TEE x 0
V500P-32
2" X 1/2" Bush
FT150
* 2V21L
- 3"**
TF2030-3
2" 90° Steel
2" Ccs N/A
V500P-32
2" Ccs N/A
2" TEE x 0
X- 2" X 1/2" Bush
FT150
* TRIP. COMM. PUMP
0-2" 90° Steel
2" X 1/2" Bush
FT150
* TRIP. COMM. PUMP.
- 3"**
TF2030-3
2" 90° Steel
2" Ccs N/A
V500P-32
2" Ccs N/A
2" TEE x 0
X- 2" X 1/2" Bush
FT150
* TRIP. ALP
0-2" 90° Steel
2" X 1" Bush
FT160
* V10
- 4"**
4" X 2" Bush
2" 90° Steel
2" Ccs N/A
V500P-32
2" X 1/2" Bush
1/2" Ccs N/A
SF150-25-5
1 1/2" Ccs N/A
2" X 1/2" Bush
V500P-32
2" Ccs N/A
2" TEE x 0
X- 2" X 1/4" Bush
FT125
* TRIP. 3.0/3.0
0-2" X 1" Bush
FT100
* SINGLE 3.0



L.R.



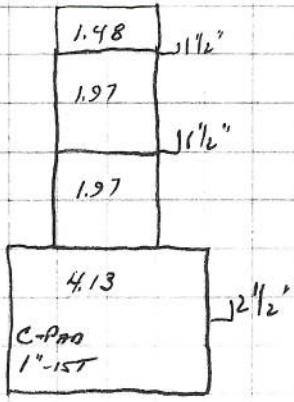
L.L.

- L.R. TANDEM 6.4
- PVE21L
- L.L. 6.4
- 3.0
- T.R. 3SVQTBSS
- GROUND DRIVE
- STEERING
- AIR HEAD
- SECONDARY
- CROSS
- SHOE

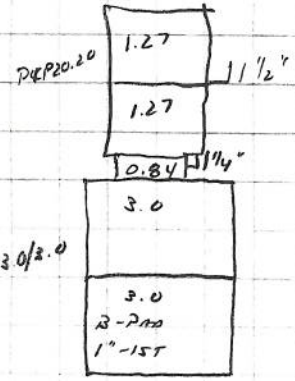
- TRIP. COMMERCIAL
- T.L. - TANDEM 3.0/3.0
- TANDEM PL20
- RIGHT SEAT TABLE
- RIGHT SEAT TABLES
- BRAND CHARGE PRESSURE
- FLUSHING

- TRIP. COMMERCIAL
- T.L. - TANDEM 3.0/3.0
- TANDEM PL20
- RIGHT SEAT TABLE
- RIGHT SEAT TABLES
- BRAND CHARGE PRESSURE
- FLUSHING

ENGINE - V10



T.R.

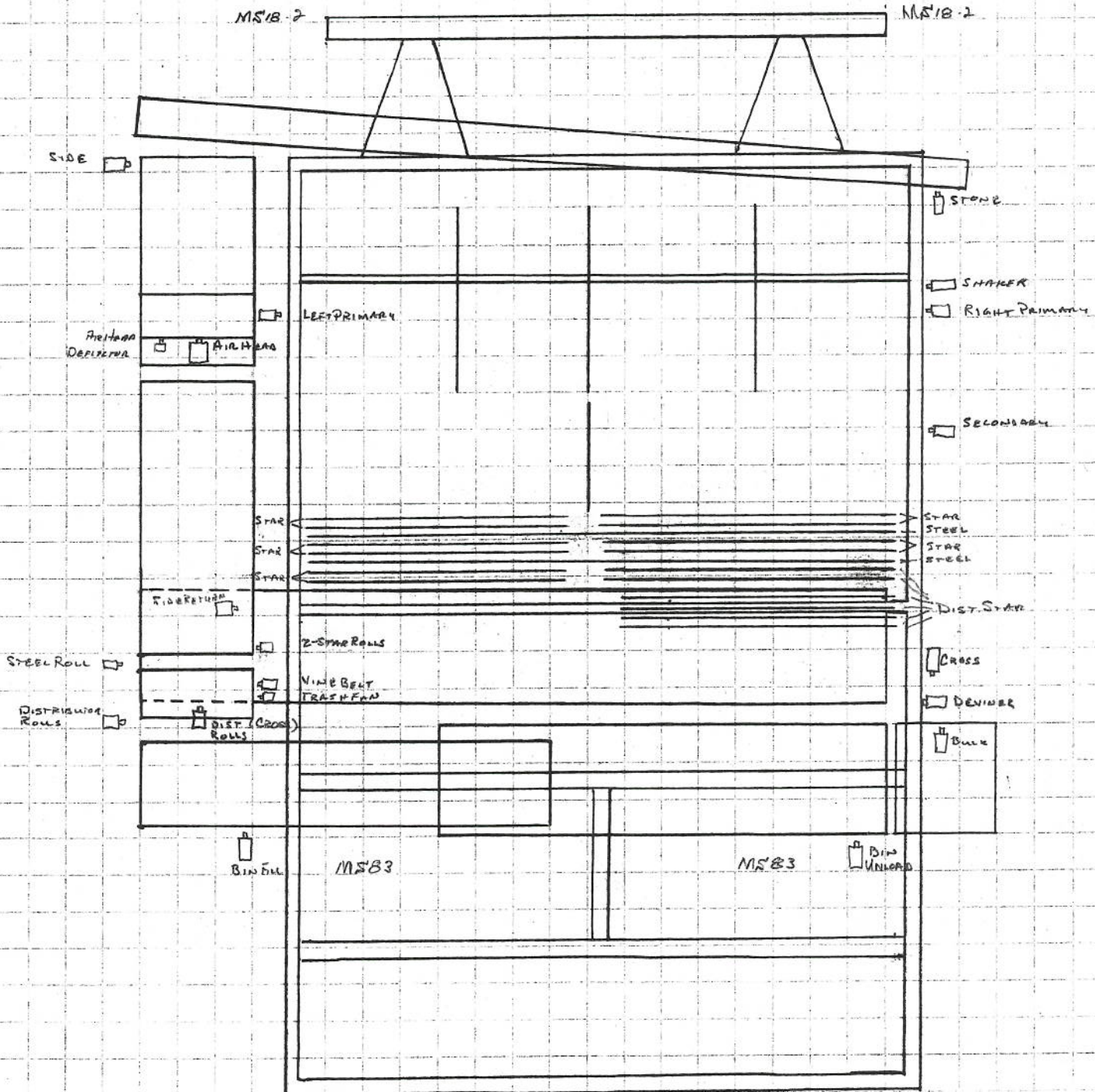


T.L.

GEAR PRODUCTS - 4/10
DP 49 / 19310 DRIVE PLATE

V10 0.6 1 1/4"
ENGINE - QSK-15-520 H.P.

6/30/08
#08030
Down 164
MRS PA-651A-H



HYDRAULICS FINISH MATERIALS LIST

BEGINNING DATE
END DATE

PROJECT NO.

QTY	PART NUMBER	DESCRIPTION
78	2035-00007	SR-14 4" SUPERIOR
16	2035-00008	SR-15 5" SUPERIOR
126	2035-07002	1 1/2" STANDOFF
20	2035-03001	R11A41
8	2035-04001	TAPERED NOSE CONE
17	2035-01001	3 1/2" KRYPTANE W/5" FLANGE
8	2035-01000	3 1/2" KRYPTANE W/OUT FLANGE
1	2035-01004	3 1/2" RUBBER W/8" FLANGE
67	2035-01009	3 1/2" STEEL W/5" FLANGE
24	2035-01008	3 1/2" STEEL W/OUT FLANGE
34	2035-03000	R11A81
20	2035-01011	3 1/2" RUBBER W/5" FLANGE
8	2035-01010	3 1/2" RUBBER W/OUT FLANGE
2	2035-H28M12BB	STONE CONVEYER
6	2035-H45M10RBSX	BULK/BIN FILL/CROSS
3	2035-H45M10RE4X	UPPER SIDE
1	2035-H45M10E4X	A.H. (LOWER SIDE)
3	2035-H45M10E4	A.H. (LOWER SIDE)
8	2035-H50M14R1E4X	PRIMARY
6	2035-H50M12REHX	SECONDARY
8	2035-01006	2 1/2" FLANGED
14	2035-01005	2 1/2" FLANGELESS
3	30025-013	EXTENDED CENTER BLADE
1	30024-013	CENTER BLADE
4	30051-013	EXTENDED DIGGER BLADE-CENTER

HYDRAULICS FINISH MATERIALS LIST

BEGINNING DATE
END DATE

PROJECT NO.

QTY	PART NUMBER	DESCRIPTION
1	2024-0100	660-1524 NIPPLE
1	2024-0098	660-1508 NIPPLE
2	2024-0091	505-1210 CLAMP
2	2024-0111	705-1013 CLAMP
4	2030-02048	BRE 52F
1	2021-23258	2 1/2 FT CONTROL CABLE
25'	2024-0082	5/8" HEATER HOSE
25'	2024-0083	3/4" HEATER HOSE
1	2024-0133	22076-023 REC./DRYER
1	2024-0080	22074-023 CONDENSER
1	2024-0120	22075-023 PRESS. SWITCH
1	2024-0134	A/C COMPRESSOR
1	2024-0186	LT-75-00 3/4" CHECK
4	2024-0089	505-1206 3/8" CLAMP
7FT	2024-0154	3/8" FUEL HOSE
1	2030-02043	B27084AZKT CLEVIS
18	2001-0263	3/8" EYE
6	2001-0264	1/2" EYE
28FT	2001-0262	210 BATTERY CABLE
3	2001-0260	BLACK HEAT SHRINK 12"
3	2001-0259	RED HEAT SHRINK 12"
1	2023-0165	DP49 GEAR BOX
1	2023-0197	DP49 DRIVE PLATE
35 FT	2009-01000	DIAPHRAM BELT
30FT	2009-01005	5" SKIRT RUBBER
125 FT	2030-02057	WHITE FOAM 2"
1	2030-02078	1/2" TREATED PLYWOOD
80 FT	2009-01007	3/8" BELTING
2	2024-0114	705-1026 CLAMP (A/C)
24	2001-0261	3/2 SOLDER PELLET

HYDRAULICS FINISH MATERIALS LIST

BEGINNING DATE
END DATE

PROJECT NO.

QTY	PART NUMBER	DESCRIPTION
5050FT		UHMW 16
150 FT		UHMW 12
8050FT		UHMW 08
8050FT		UHMW 04
1	2024-0027	4058 NAPA COOL
4662	2024-0143	ANTI-FREEZE
2	2024-0018	ENGINE SCREEN 22012-023
5	2017-03012	3/4" BALL VALVE
2 QT	2024-0177	15W 410
14 QT	2036-0005	80W 90
250 GAL	2036-0001	WDWIS N68
4	2030-02056	DSR 2460 COULTER
4	31011-007	WIDE COULTER CAP PROTECTOR
2	2001-0239	44030 BATTERY DISCONNECT
2	2001-0296	44032 DISCONNECT NAME PLATE
8	2001-0062	728006 BATTERY NUT
4	2001-0064	BATTERIES - V. AUTO
13"		1/4"-28 ALL THREAD
1	2001-0039	FUEL PUMP FRB-5-1
1	2024-0020	A/C HOSE KIT
1	2024-0019	8" TURBO II PRECLEANER
1	2009-03000	BIN BELT
4	2030-02028	CAB MOUNT
1	2006-302048	TAPERLOCK
1	2006-302028	TAPERLOCK
2	2029-0008	PX120 FLANGE 20010-020
1	2029-0007	PX120 ELEMENT 20009-020

2003-00397	08030 Downey 4RSPH65LAH	1/2x3x3x50mm 2x60 2DNPL-1STPL 109+	Used Pair Noff Primary (4)
2003-00398	08030 Downey 4RSPH65LAH	7/16x68x50mm 3x60 STSRT 59+	Noff Secondary (2)
2003-00399	08030 Downey 4RSPH65LAH	5/8x68x150mm 2x60 STSRT 65LPR	Noff Deviner (2)
2003-00400	08030 Downey 4RSPH65LAH	7/16x48x45mm 2x60 STSRT 230+	Noff Rear Cross
2003-00401	08030 Downey 4RSPH65LAH	7/16x65x45mm 3x60 STSRT 339+	Noff Lower Side
2003-00402	08030 Downey 4RSPH65LAH	7/16x65x45mm 3x60 10STSRT-1UPSRT 279+	Noff Upper Side
2003-00403	08030 Downey 4RSPH65LAH	7/16x35x45mm 2x60 STSRT 280+	Noff Bin Fill Conv
2003-00404	08030 Downey 4RSPH65LAH	7/16x40x45mm 2x60 STSRT 189+	Noff Bulkloader
2003-00405	08030 Downey 4RSPH65LAH	7/16x14x28mm 2x60 STPL 459+	Noff Belted Stone Conv

DENVER (- 1 LINK)
 BIN FILL (- 19 LINKS)
 BULK LOADER (- 9 LINKS)

8 - 2004-50140 50mm Clips - Primary
 4 - 2004-50140 50mm DENVER
 2 - 2004-45140 45mm BIN FILL
 2 - 2004-45140 45mm BULK LOADER