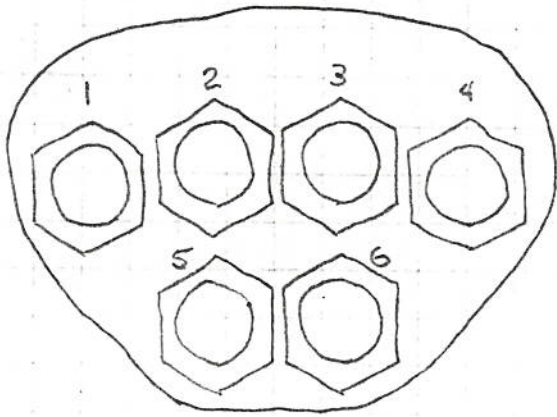


#1304

WYsock 1

4 RSPH W/Air 4x4 Rear Steer

94-97



VALVE BANK

SWING

LIFT

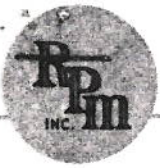
TILT

STONE BOX

COUNTERS

BLADE

1. STONE BOX	BLACK RED
2 TILT	ORANGE BLUE:
3. LIFT	BLACK/WHITE RED/WHITE
4 SWING	BLUE/WHITE GREEN/WHITE
5 COUNTERS	ORANGE/BLACK BLUE/BLACK
6. BLADE	RED/BLACK GREEN/BLACK
12VDC +	WHITE
GROUND -	GREEN
SPARE	WHITE/BLACK



# R.P.M. INC.

400 - 36TH STREET S.E., GRAND RAPIDS, MICH. 49548-2383

PHONE (616) 247-0633 • FAX (616) 247-8084

9/2000

30A	30A	20A	30A	20A	20A	30A	20A	20A	30A	20A	1
12 PRIM/LT SIDE	11 ROAD	10 TEMPAGA	9 CAB FIELD	8 HOT "	7 CYL-2 SPD	6 RADIO	5 CONVEYORS	4 STEER	3 LEFT	2 RIGHT	1 HAZARD
WHITE 85(1)	BROWN 86(1)	PURPLE 87(1)	BLACK	RED 22(2)	RED 21(4)	RED 12(3)	YELLOW 89(1)	BLACK 017(1)	ORANGE 90(1)	GREEN 91(1)	YELLOW TURN
	BROWN 88(1)	BLUE 87(1)		BLACK 156(2)	BLACK 0012(1)	RED 18(3)		BLACK 48			BROWN
HAZARD STAT - CB1		TURN STAT - CB1						WARNING			SWITCHES
YELLOW 192(1)		BROWN 502(5)						GROUND DRIVE IN			BROWN 88(1)
								BLUE/BLACK 8			
								AIR HORN FILM			
								YELLOW/BLACK 10			
								TANK LEVEL			
								YELLOW/ORANGE 25			
								CROSS SPX SWITCH			
								BLACK 40			

### RELAYS

#### BACK LIGHTS

85	⊕	85	⊕
86	BROWN 06(2)	86	
87	BROWN CB11	87	
30	BROWN 6	30	

#### 20A 30A 30A 30A

16 PRIM/LT SIDE LIGHTS RELAY	15 CAB ROAD LIGHT RELAY	14 LEFT WORK LT RELAY	13 RIGHT WORK LT RELAY
BLACK	BLACK	BLACK	BLUE

30A 20A 20A  
A/C 12 17

#### ROAD LIGHTS

	PRIMARY/LEFT SIDE (BOR)
85	⊕
86	PURPLE 094(2)
87	PURPLE CB11
30	PURPLE 94

#### RIGHT WORK LIGHTS

85	⊕
86	YELLOW 101(2)
87	CB19 BLACK
30	(3) WHITE (1) BLACK

RED 11(5)	RED 13(5)	BLUE/RED 13
--------------	--------------	----------------

ST 87

#### CAB FIELD LIGHTS

85	⊕
86	BROWN 504(3)
87	BROWN CB9
30	BROWN 507(3)

#### RIGHT WORK LIGHTS

85	⊕
86	BLUE 056(2)
87	BLUE CB13
30	BLUE 36

ST 87

RED 13(5)

#### CAB ROAD LIGHTS

85	⊕
86	BROWN 503(3)
87	BROWN CB15
30	BROWN 526(5)

#### LEFT WORK LIGHTS

85	⊕
86	BLACK 034(2)
87	BLACK CB14
30	BLACK 34

#### AIR HORN CLEANER

#### TIMER

87	BLUE 26(1)
9	WHITE 27(1)
10/11	PURPLE 28(1)
6/2	⊕

⊕ BLACK  
20(3)

LEFT/RIGHT WIRING

WO#2456

WYSOCKI FARMS

1-17-02

REWIRE 1994 MACHINE

LEFT

BLACK	34	✓ LEFT WORK LIGHTS (LEFT REAR)	P
BLACK	340	✓ LEFT WORK LIGHTS (LEFT FRONT)	P
RED	70	SIDE RDRS ACTUATOR	
PURPLE	69	SIDE RDRS ACTUATOR	
WHITE	27	✓ A.H. CLEANER VALVE TO # 9 ON TIMER	P
BLUE	26	✓ A.H. CLEANER VALVE TO # 8 ON TIMER	P
YELLOW	53	LEFT TURN	

RIGHT

BROWN	54	RIGHT TURN	
YELLOW	33	VIBRATOR RDRS ACTUATOR	
RED	32	VIBRATOR RDRS ACTUATOR	
RED	149	SECONDARY RDRS ACTUATOR	
YELLOW	150	SECONDARY RDRS ACTUATOR	
WHITE	61	CROSS SPX-N.O.	
BLACK	60	✓ CROSS SPX-COMMON	P
BLUE	36	✓ RIGHT WORK LIGHTS ( RIGHT REAR)	P
BLUE	360	✓ RIGHT WORK LIGHTS (RIGHT FRONT)	P
Brown	38	CAB LIGHTS	P

VALVE

BANK		
BLACK	108	STONE BOX MV5
RED	109	STONE BOX MV5
YELLOW	116	COULTER MV5
BROWN	117	COULTER MV5
RED	118	BLADE MV5
BLACK	119	BLADE MV5



AIR-HEAD MACHINE REAR WIRING

WO#2456

WYSOCKI FARMS

1-17-02

REWIRE 1994 MACHINE

PLUG # 5

PIN #

1	RED	✓ 11
3	RED	✓ 13
4	BROWN	✓ 502
5	WHITE	104
14	BLACK	059
18	BROWN	54
20	YELLOW	53
15	RED	0015

COLUMN

ST 87 HOT SIDE	P
ST 87 IGNITION	P
TURN STAT	P
CLUTCH SWT. N.C. TO START RELAY (RED #2)	
PARK SWT. TO CLUTCH SWT. N.O.	
RIGHT TURN	
LEFT TURN	
CLUTCH SWITCH N.O. TO BRAKE SOLENOID TO CLUTCH SV4 RED 15	

BLUE	55
ORANGE	56
PURPLE	83
RED	120
YELLOW	121

**REAR STEERING**  
 TO STEERING BOX  
 TO STEERING BOX  
 TO STEERING BOX  
 RELAY TO MV4  
 RELAY TO MV4

BROWN	54
YELLOW	53
RED	82
WHITE	58
BROWN	123
RED	81
ORANGE	145
BLUE	146
RED	0015
RED	15

**REAR**  
 RIGHT TURN  
 LEFT TURN  
 SECONDARY SOLENOID  
 FUEL GAUGE  
 PRIMARY CIRCUIT TEMP.SENSOR  
 FUEL PUMP  
 PRIMARY PUMP ACTUATOR  
 PRIMARY PUMP ACTUATOR  
 CLUTCH SWITCH N.O. TO BRAKE SOLENOID  
 BRAKE SOL. (RED 0015) TO CLUTCH SV4

**BRAKE SMX PRESSURE SWITCH**

1	12VDC	RED 0015
2	N.C.	
3	N.O.	RED 15

**SOLENOID VALVES**

1	12VDC
2	GROUND

1-16-02

WO#2456

## WYSOCKI FARMS

## REWIRE 1994 MACHINE

BLK	1		4X4 TO SOLENOID	PANEL
	12	RED	2-SPEED TO CAB	
	17	BLUE	BRK SWT. (BLK 059) TO FT. SWT. (RED 0015) TO BRAKE SOL.	
	22	ORANGE		
RED	2		CLUTCH SWT.(WHT 104) TO START RELAY	
	7	BLACK	TACH "S" TO TACH SENSOR	
	18	BLUE	TACH "G" TO TACH SENSOR	
	23	ORANGE	HYDRAULIC OIL TEMP SENSOR TO CAB	
BLUE	3		GRD. DRIVE FILTER #3 TO CAB	
	8	BLACK	GRD. DRIVE FILTER #1 TO PANEL #4 C.B.	PANEL ✓
	13	RED	ST87 IGN. SIDE TO FUEL SHUT OFF SOL.	PANEL ✓
	24	ORANGE	C" ON THERMAL FUSE TO A/C COMP.	PANEL ✓
ORN	4		ENG. WATER TEMP. SENDER TO GAUGE	
	9	BLACK	ENG. WATER TEMP. SENSOR TO LIGHT	
	14	RED	ENGINE OIL PRESS. SENDER TO GAUGE	
	19	BLUE	ENGINE OIL PRESS. SENSOR TO LIGHT	
YEL	5		SIDE CONVEYOR SOLENOID	
	10	BLACK	FAN FILTER #1 TO PANEL #4 C.B.	PANEL ✓
	15	RED	FAN FILTER #3 TO CAB	
	20	BLUE	HYD. OIL LEVEL SENSOR TO CAB	
	25	ORANGE	HYD. OIL LEVEL SENSOR TO PANEL #4 C.B.	PANEL ✓
BRN	6		BACK-UP LIGHTS	PANEL ✓
	11	BLACK	SORTING CONVEYOR SOLENOID	
	16	RED	CROSS CONVEYOR SOLENOID	
	21	BLUE	PRIMARY CONVEYOR SOLENOID	

## RIGHT SIDE OF CAB WIRING

RED	31A		CAB FAN SWITCH TO PANEL #13 C.B.	PANEL ✓
ORANGE	#033B		TO "B" ON THERMAL FUSE FOR A/C	PANEL ✓
BLACK	30B		WIPER-RADIO SWITCH TO #6 C.B. (RED 22)	PANEL ✓
PINK/BLK	20B		DOME LIGHT TO #8 C.B. (RED 22)	PANEL ✓
BROWN	21M		DASH LIGHT TO #8 C.B. (RED 22)	PANEL ✓

1-17-02

WO#2456

WYSOCKI FARMS

**REWIRE 1994 MACHINE**

BLACK	✓ 34	LEFT WORK LIGHTS TO RELAY #30 (LEFT REAR)
BLACK	✓ 60	CB4 TO CROSS SPX COMMON
BLUE	✓ 36	RIGHT WORK LIGHTS TO RELAY #30 (RIGHT REAR)
RED/BLUE	✓ 18	TACH SENSOR TO GROUND
BLUE/BLACK	✓ 8	CB4 TO GROUND DRIVE FILTER #1
BLUE/RED	✓ 13	ST87 IGNITION SIDE TO FUEL SHUT-OFF SOLENOID
YELLOW/ORANGE	✓ 25	CB4 TO HYDRAULIC OIL LEVEL SENSOR
BROWN	✓ 6	BACK-UP LIGHTS TO RELAY #30
RED	✓ 11	ST87 HOT SIDE
RED	✓ 13	ST87 IGNITION SIDE
BROWN	✓ 502	TURN STAT
BLUE	✓ 26	AIR-HEAD CLEANER TIMER #8 TO VALVE
WHITE	✓ 27	AIR-HEAD CLEANER TIMER #9 TO VALVE
YELLOW/BLACK	✓ 10	CB4 to AIR-HEAD FAN FILTER #1
BLUE	✓ 360	RIGHT WORK LIGHTS TO RELAY #30 (RIGHT FRONT)
BLACK	✓ 340	LEFT WORK LIGHTS TO RELAY #30 (LEFT FRONT)



# Fischer-Flack, INC.

**CORPORATE HEADQUARTERS**  
 2115 RUST AVENUE • P.O. BOX 1508  
 SAGINAW, MICHIGAN 48605 • 517/752-4181

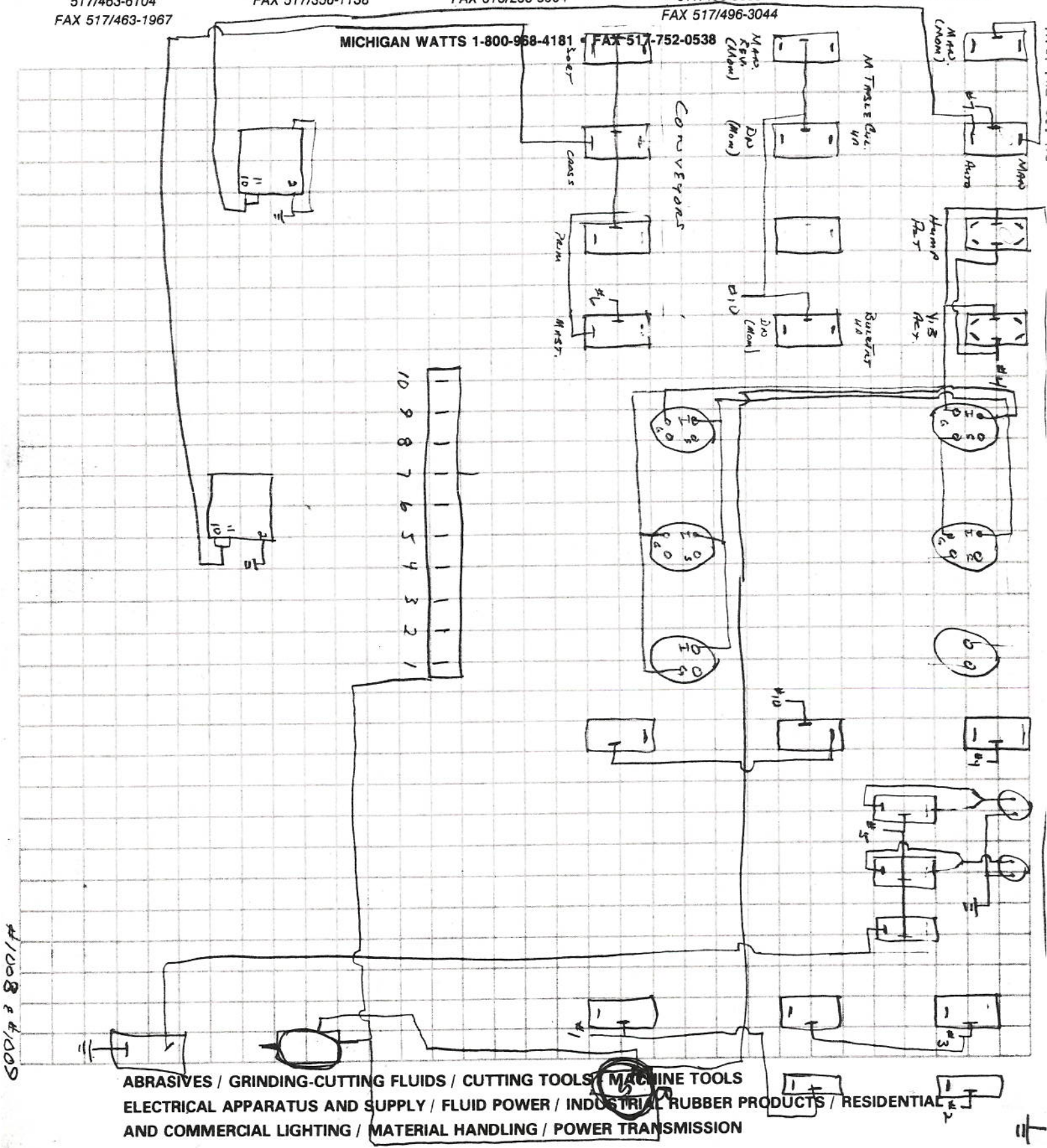
6585 N. Jerome  
 P.O. Box 229  
 Alma, MI 48801  
 517/463-6104  
 FAX 517/463-1967

119 W. Fletcher  
 Alpena, MI 49707  
 517/356-3411  
 FAX 517/356-1138

303 W. Water St.  
 Flint, MI 48502  
 313/235-6420  
 FAX 313/235-8904

3201 Bay City Rd.  
 P.O. Box 1687  
 Midland, MI 48640  
 517/496-3600  
 FAX 517/496-3044

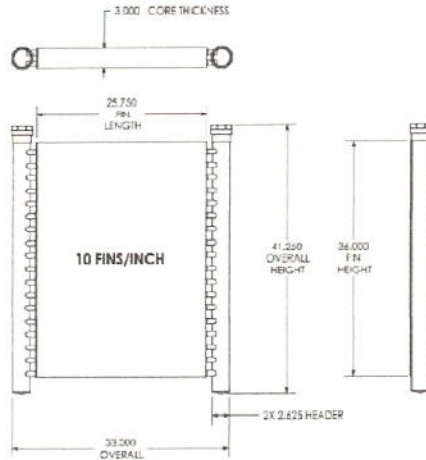
2415 24th St.  
 Port Huron, MI 48060  
 313/985-8183  
 FAX 313/985-8183 Ext. 22



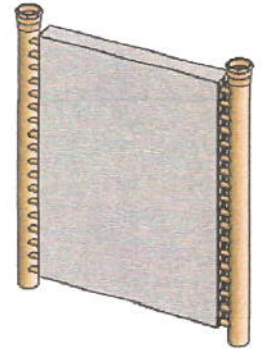
ABRASIVES / GRINDING-CUTTING FLUIDS / CUTTING TOOLS / MACHINE TOOLS  
 ELECTRICAL APPARATUS AND SUPPLY / FLUID POWER / INDUSTRIAL RUBBER PRODUCTS / RESIDENTIAL  
 AND COMMERCIAL LIGHTING / MATERIAL HANDLING / POWER TRANSMISSION



## DIMENSIONS



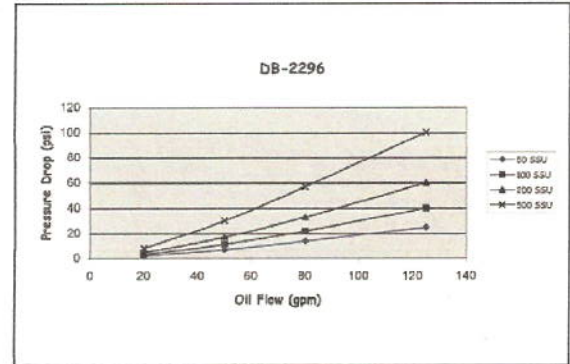
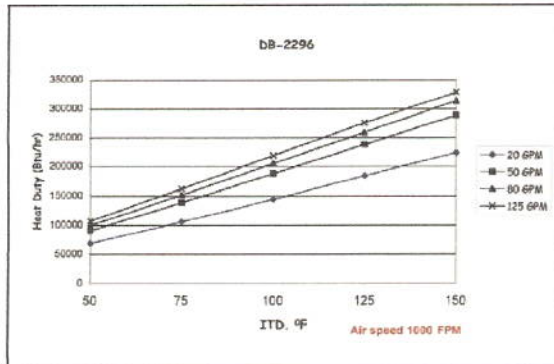
## APPEARANCE



## SPECIFICATIONS

Flow Range (GPM): .....20 - 125  
 Heat Rejection Range (BTU/Hr):  
 134,000 - 222,000  
 Fitting Size:.....2" FPT  
 Material  
 Copper Tube:.....CDA122  
 Inner Tube: .....AI-3003  
 Inner Fin: .....AI - 1100  
 Outer Fin: .....AI - 1100  
 Fitting:.....Copper  
 Cooler Weight (lbs.)  
 Total Weight :.....56 lbs.

## PERFORMANCE



Air Head Control 10  
 Manual 3 Auto 0  
 Manual 10  
 Coolant Fan Rev 0

1 Valve & Belt Speed Control  
 Rev 5 UP 5 502 5 VIB. 0

Fuel

Hyd. Temp

Eng. Oil Press

Rem. Steel

HI

LO

TEST SWITCHES

LIGHTS

Park Brake  
 5 GRUDEV 4 FAN  
 0 1 PRESS 4 HYD. SORT 5 PRIM  
 2 FILTERS 0 LEVEL 0

CONVEYORS

0 0 0 0 0 0 0 0 0 0  
 FAN 4 SORT 4 SIOF 4 CROSS 3 PRIM 4 MASTER 4 ENG WARD 6 HYD. OIL

Hyd. Temp

No. 1

TRUCK

4X2

0 0  
 GAS 4 BACK UP

High Temp  
 Low Oil Press

2 0  
 ENGINE 4 LOW HYD.  
 FUEL 6 OIL

1A	2A	20KB	20A	20A	20A	20A	30A	20A	20A	20A	20A	20A	30A	30A	30A	30A	
15	14	13	12	11	10	9	8	7	6	5	4	3	2	1			
SPERIMENTAL TACH.		ACTUATORS GAS		GAUGES		CYLINDERS		DOME		AIR COND. COOLER		CONVEYORS		WHEEL		PARK SORT	
			BACKUP LIGHTS		2-SPEED 4X4	WHEEL DRIVE					TEST SYSTEMS	TRUCK LIGHTS					

STEERING

APR HEAD CLEANER

#8 DO TIME TO SOL

#9 DO TIME TO SOL

TRIM VIE AFT

PAINT VIE AFT

CORR LIGHTS (BLUE)

TRIM LIGHTS (HALFTO-GLASS)

(CAR LIGHTS

VINE BERT REV.

#10 FUSE TO WHITE 110 CYCLE TECH

VINE BERT AFT

VINE BERT AFT

TRASH CAN SOL

SPEEDOMETER + 12VDC

GROUND

12VDC

POLYMER SENSOR

POLYMER GROUND

1 ATMOSPHERE  
WHITE

LEFT TURN SIGNAL #523 GROUND (LOOK W/ #513)

RIGHT TURN SIGNAL #522 GROUND (LOOK W/ #512)

TURN SIGNAL TURNER TO SOL (LOOK W/ #507)

ST 87 HOT SIDE TO #11 COLUMN

#13 COLUMN (IGN) TO ST 87 (IGN)

FUEL GAUGE

PARK SWITCH TO BATTERY SIDE SL 186

12VDC TO #5 FUSE TO "C" ON CROSS PRESS SWICH

BZ 1652 TO "N.D." ON CROSS PRESS SWICH

R REAR STEER SENSOR (R/WHERE R/TURN)

R REAR STEER SENSOR (R/WHERE L/TURN)

REAR GREEN SOL

SIDE CONN FLOW GROUND AFT

SIDE CONN FLOW GROUND AFT

FUEL PUMP TO #4 FUSE

COOLER FAN REVERSE

GROUND ON REAR STEERING SENSORS

SECONDARY RETURN

SECONDARY RETURN

PRIMARY RETURN

PRIMARY RETURN

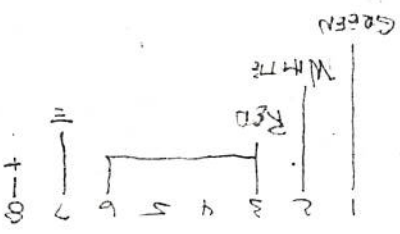
PRIMARY HI TEMP WARN

PRIMARY HI TEMP WARN

GROUND DRIVE FLYT LIGHT (RED/SIDE)

- 10' Blue 26
- 10' White 27
- 32 Red 32
- 33 Yellow 33
- 34 Black 34
- 35 Blue 35
- 38 Brown 38
- 39 White 39
- 44 White 44
- 45 Green 45
- 46 Brown 46
- 47 Purple 47
- 48 Black 48
- 49 Green 49
- 49 Red 49
- 49 White 49
- 49 Green 49
- 53 Yellow 53
- 54 Brown 54
- 502 Black 502
- 55 Black 55
- 56 Black 56
- 58 White 58
- 59 Black 59
- 60 Black 60
- 61 White 61
- 65 White 65
- 66 Green 66
- 68 White 68
- 69 Purple 69
- 70 Red 70
- 81 Red 81
- 82 Orange 82
- 83 Purple 83
- 84 Purple 84
- 85 Orange 85
- 86 Purple 86
- 87 Orange 87
- 88 Purple 88
- 89 Orange 89
- 90 Purple 90

STEERING SENSORS  
 Black GROUND - Purple # 83  
 Red - N.C.  
 Blue - N.O. - RT (LOOKS WHITE) # 65  
 - L/TURN - GREEN # 66







400 - 36TH STREET, S.E.  
GRAND RAPIDS, MICH. 49508

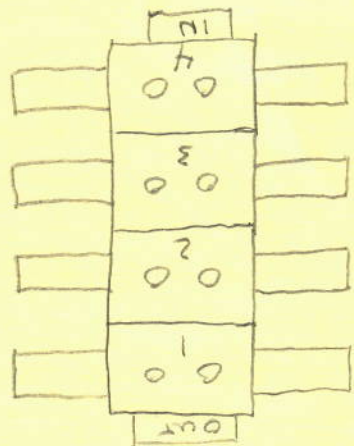
PHONE (616) 247-0633

R.P.M. INC.

#1304

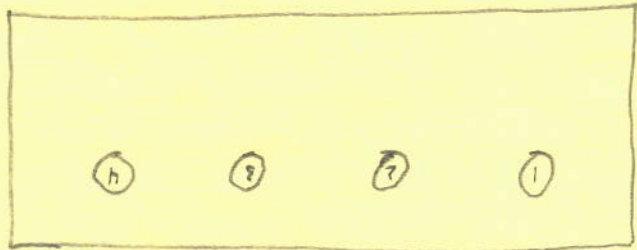
Wire Color	Terminal #	Description
Black	#1	4X4
Red	#12	2-SPED
Blue	#17	#4 Fuse To Park Switch From Switch Black #9 To Back Of SH8L To Brake
Orange	#22	#104 WHITE In Column To Side Of SL86 - #2 Red To Switch RUM
Red	#2	Tach #5 To Sensor
Black	#7	Tach #6 To Sensor
Blue	#18	HYD. OIL TEMP SENSOR
Orange	#23	LIGHT TO GRD. HYDRO FILT #3
Blue	#3	GRD. HYDRO SWITCH TO FILT #1 (RWD)
Black	#8	STB-IGN. SIDE TO FUEL SHUT-OFF SOL.
Brown	#13	"C" ON REAR FUSE TO A.C. COMP.
Orange	#24	WATER SENDER-GAUGE
Black	#9	WATER LIGHT
Red	#14	OIL SENDER GAUGE
Blue	#19	OIL LIGHT
Yellow	#5	SIDE BATTERY SOL.
Black	#10	FAN FILTER SWITCH TO FANT #1 (LYOK)
Red	#15	LIGHT TO FAN FILT #3
Blue	#20	HYD. OIL LEVEL SENSOR TO REAR WHEEL
Orange	#25	HYD. OIL LEVEL TEST SWITCH TO SENSOR (RWD)
Brown	#6	BACK UP LIGHTS
Black	#11	SOFT BULK SOL.
Red	#16	GROSS SOL.
Blue	#21	PRIM SOL.
Right Side Of Car	31	FAN (RED) #8 Fuse
	033	B-FL. COMPRESSOR SWITCH (DETRU) To "B" ON REAR FUSE
	30	B. WIPER-RADIO (BLACK) #9 Fuse
	20	DOME (Pink/Black) #9 Fuse
	21M	DASH LIGHT (BROWN) #9 Fuse

1993 K-10 EN16.0R855



VALUE BANK

- 1 - BANK 01
- 02
- 2 - BANK 03
- 04
- 3 - BANK 05
- 06
- 4 - BANK 07
- 08



#1304 EXTRA VALUE BANK AND PARSER