

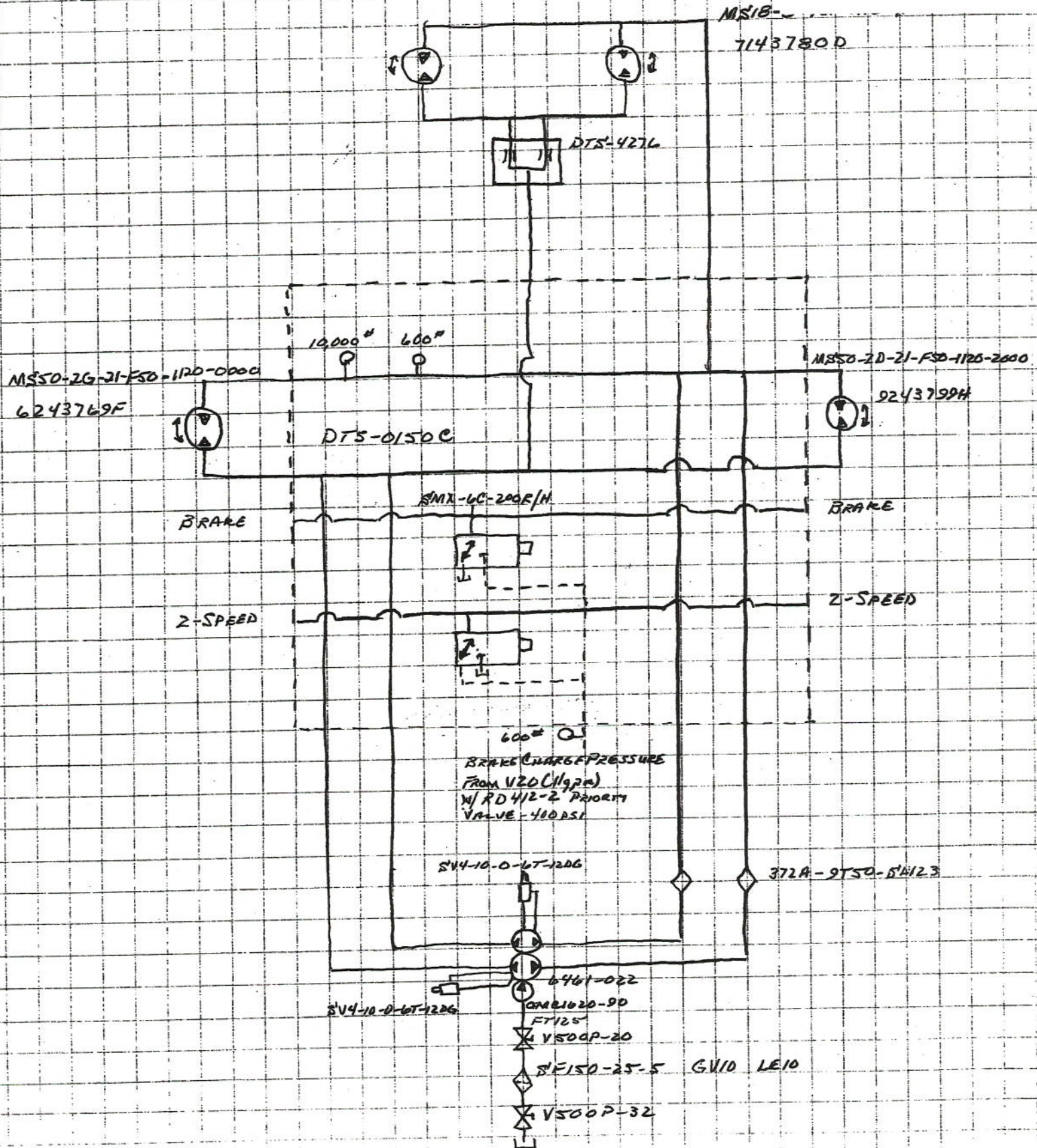
#2007

McLennan Farms

4RS PH $\frac{w}{65}$ AH

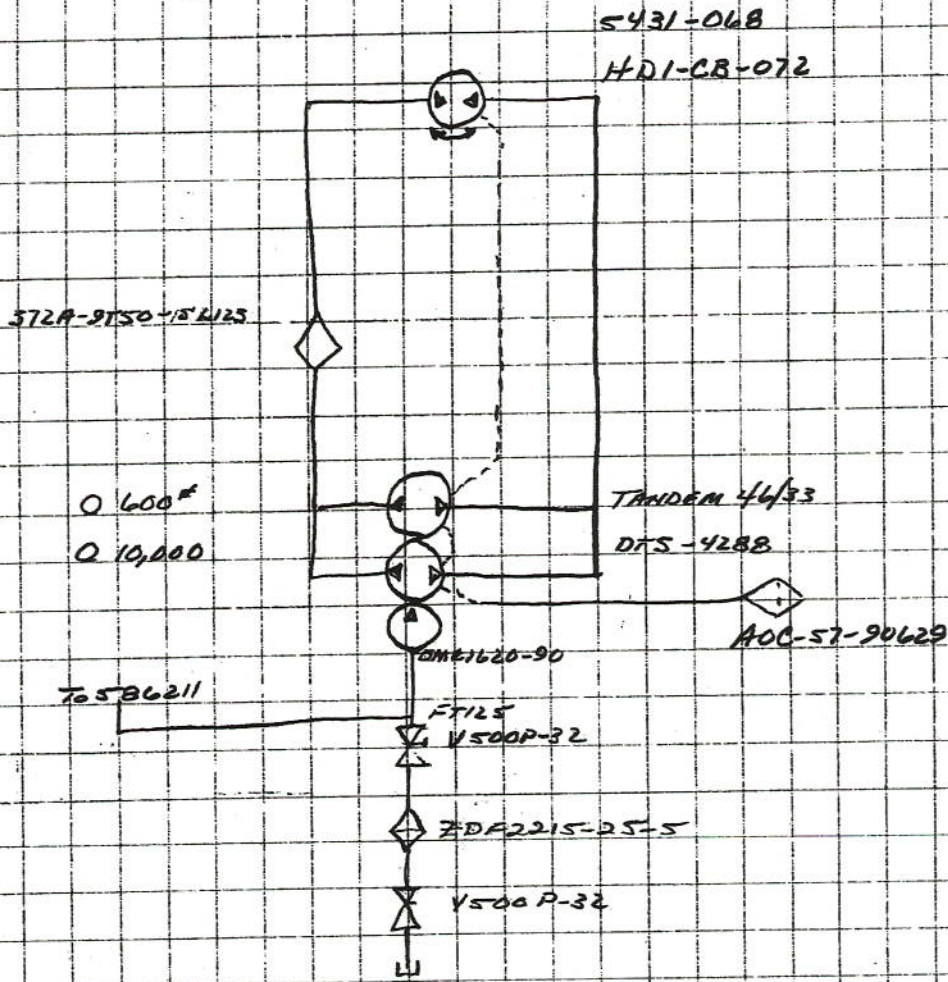
2000 SELF PROPELLED HARVESTER GROUND DRIV

2007 2000-164
BEATIE
4R5A4 W/65"



12/1/99

2000 SELF PROPELLED HARVESTER AIR HEAD 65"

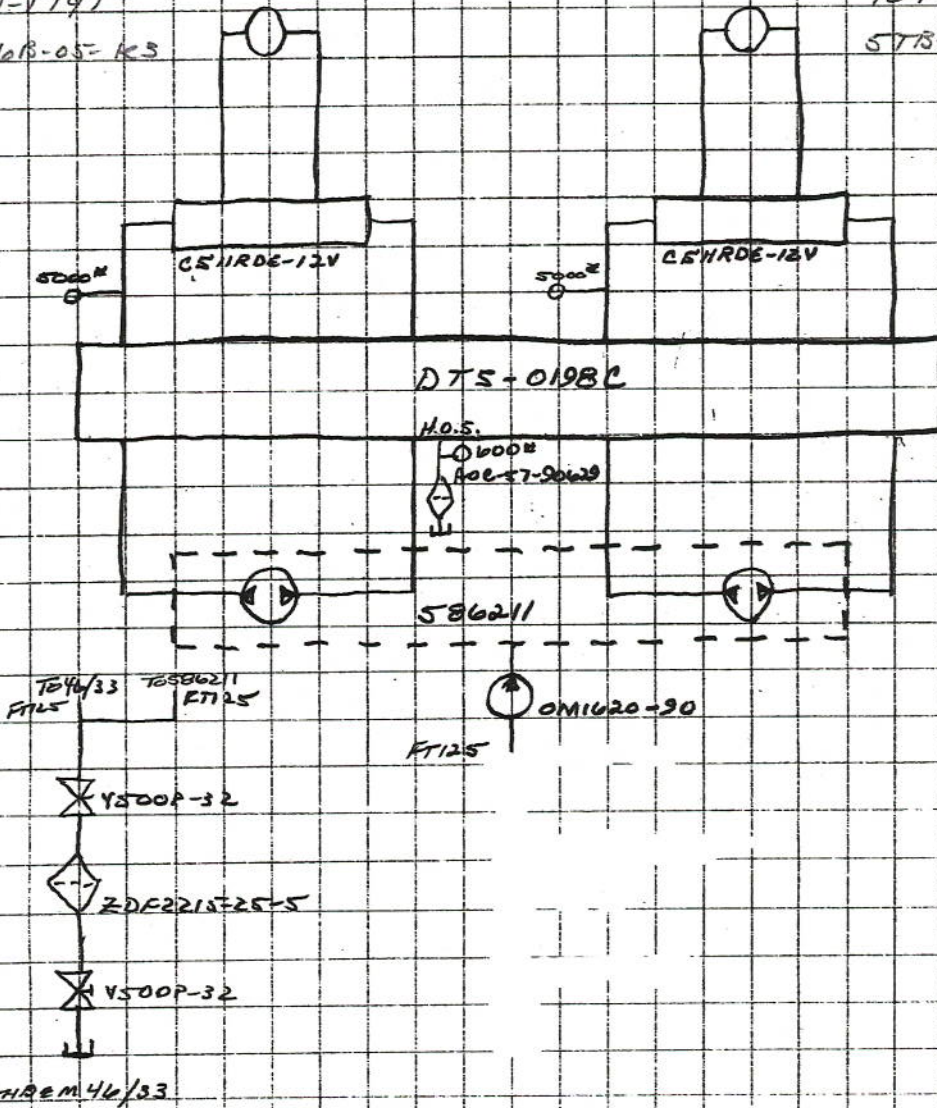


3/2/00

2000 PRIMARY CIRCUIT TA1919 (586211)

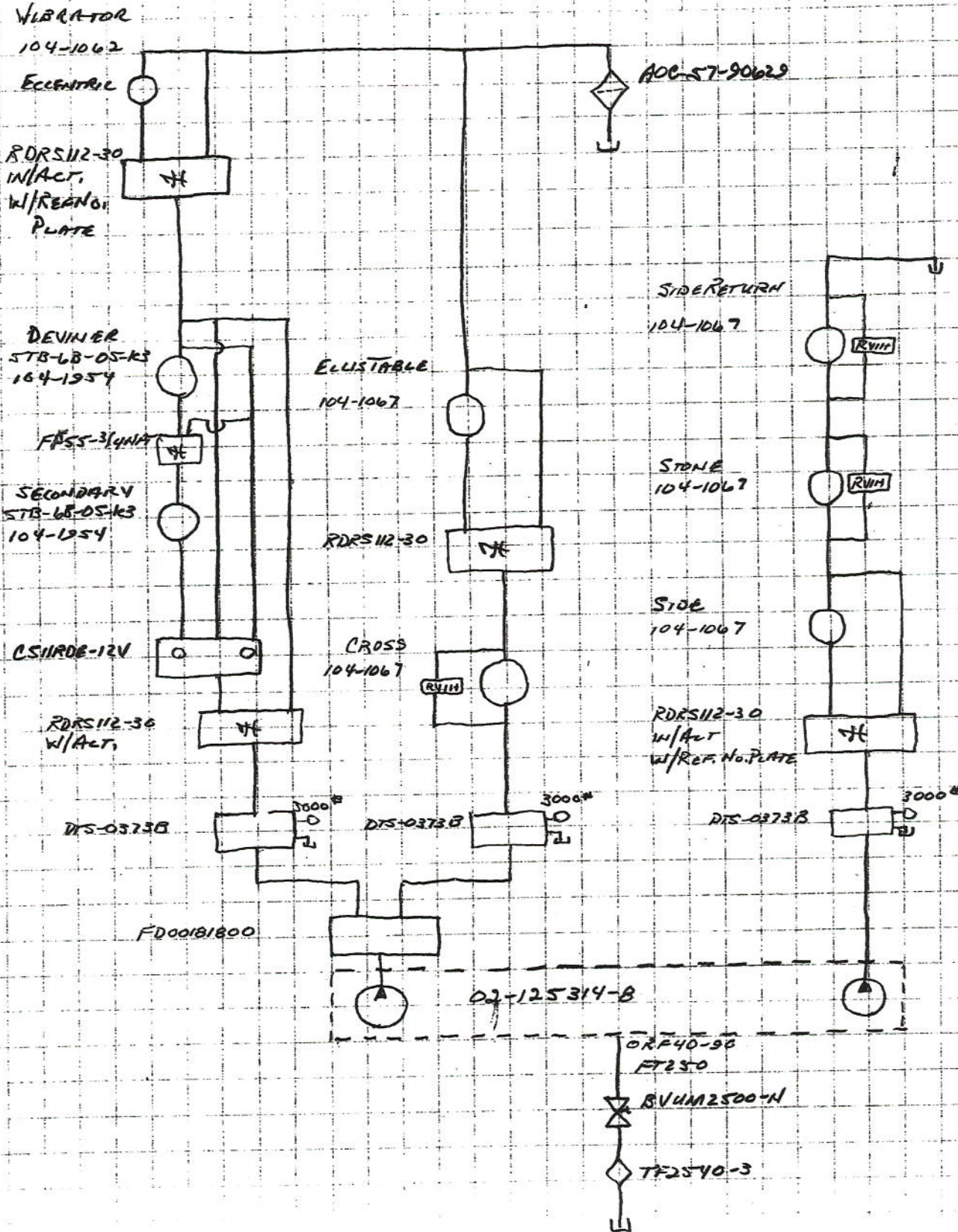
LEFT PRIMARY
104-1747
STB-6B-05-K3

RIGHT PRIMARY
104-1747
STB-6B-05-K3



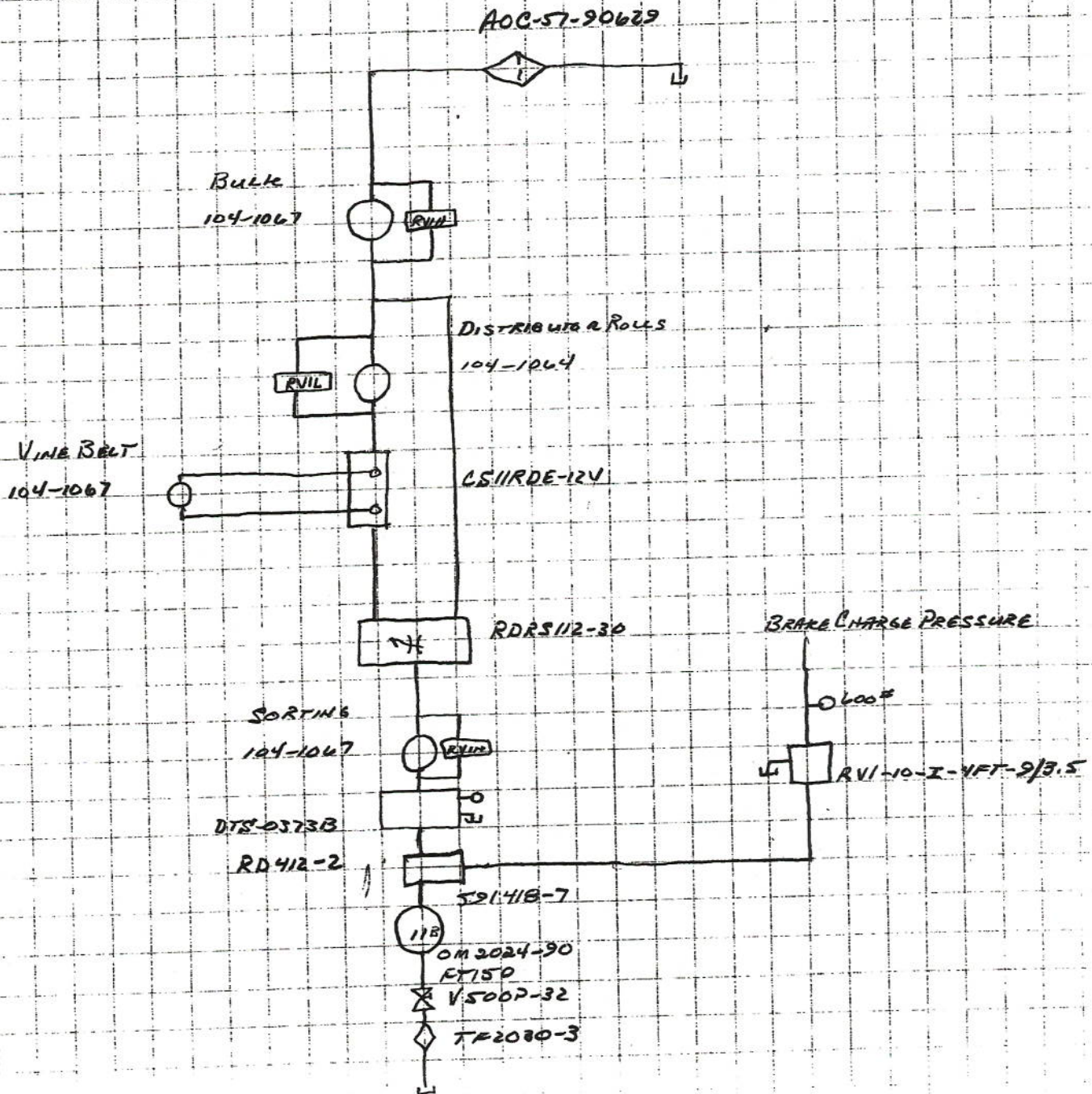
2000 - SECONDARY/CROSS/SIDE CIRCUITS
 2520 VQ (02-125314-B)

3/6/00
 #2007



2000 - SORTING/BRAKE CHARGE PRESSURE CIRCUITS
V20 L1162M (591418-7)

3/2/00
#2007

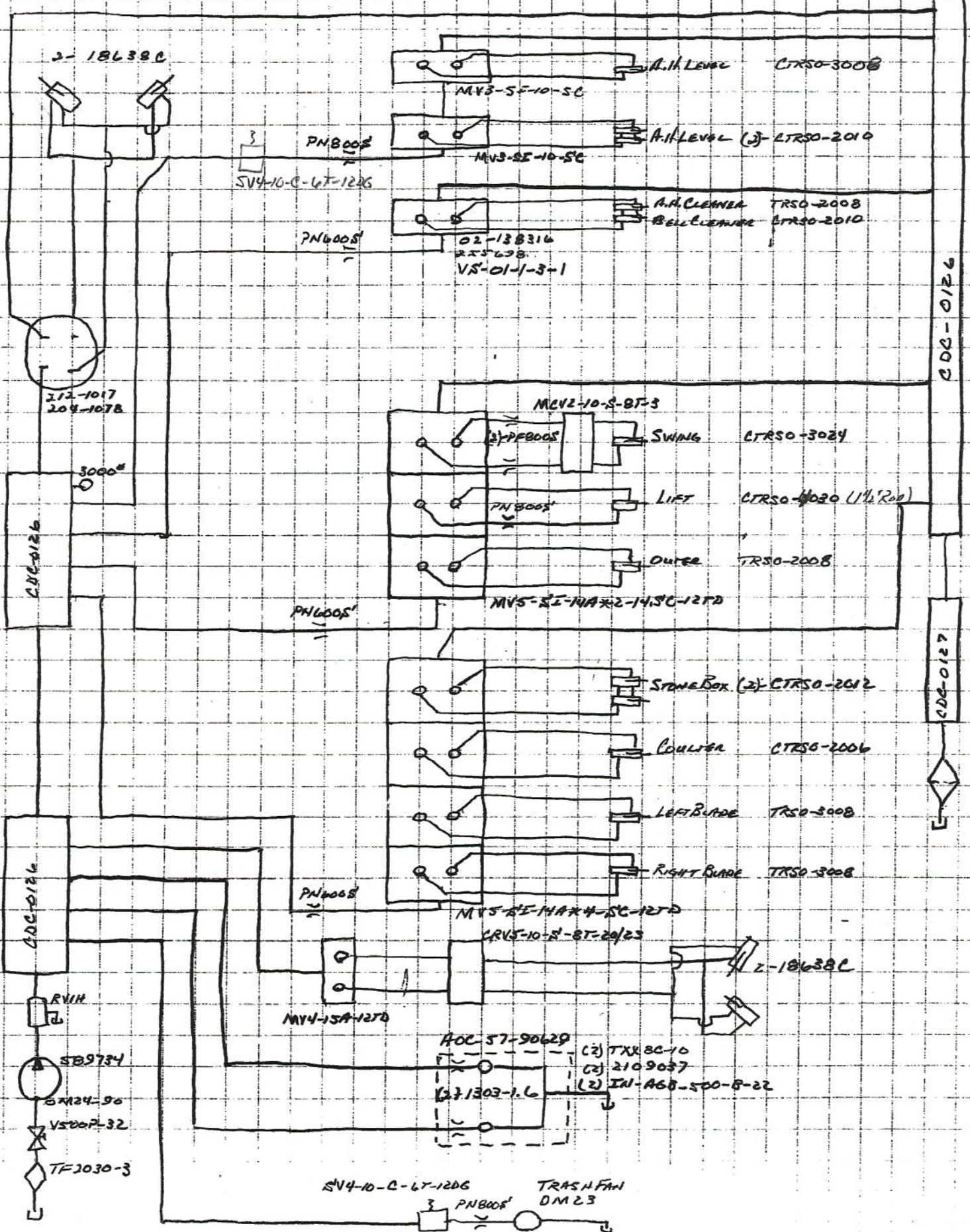


2000 - STEERING / VALVE BANK CIRCUITS

PVELIL C589734

3/6/00

#2007



6.5" Air Head MACHINE

PLUG # 1

PIN 1	YELLOW	92	CB1 TO HARARD START TO SWITCH
2	GREEN	91	CB2 TO RIGHT WORK LIGHT RELAY/SWITCH
3	ORANGE	90	CB3 TO LEFT WORK LIGHT RELAY/SWITCH
4	BLACK	017	CB4 TO BRAKE, STEER, WARNING, SPEEDOMETER
5	RED	081	CB10 TO FUEL PUMP SWITCH
6	YELLOW	89	CB5 TO MASTER SWITCH
7			
8	BLACK	0012	CB7 TO 2-SPEED
9	BLACK	0017	BRAKE SWITCH TO BRAKE SOLENOID Black/Blue 17
10	BROWN	88	CB11 TO ROAD/BACKUP RELAYS/SWITCH
11	WHITE	85	CB12 TO ACTUATOR SWITCHES
12	RED	81	FUEL PUMP SWITCH TO FUEL PUMP
13	PURPLE	28	AIR HEAD CLEAN AUTO TO TIMER #10
14	WHITE	27	AIR HEAD CLEAN MANUAL TO TIMER #9 TO SOLENOID
15	BLUE	26	AIR HEAD CLEAN MANUAL TO TIME #8 TO SOLENOID
16	BROWN	46	VINE BELT ACTUATOR
17	GREEN	45	VINE BELT ACTUATOR
18	WHITE	39	VINE BELT REVERSE
19	YELLOW	33	PRIMARY VIBRATOR ACTUATOR
20	RED	32	PRIMARY VIBRATOR ACTUATOR
21	RED	70	SIDE CONVEYOR FLOW CONTROL ACTUATOR
22	PURPLE	69	SIDE CONVEYOR FLOW CONTROL ACTUATOR
23	RED	52	CB 16 TO FOOT SWITCHES 12VDC
24	PURPLE	83	FOOT SWITCHES TO STEERING BOX
25	BLACK	108	STONE BOX MVS
26	RED	109	STONE BOX MVS
27	YELLOW	116	COLTER MVS
28	BROWN	117	COLTER MVS
29	PURPLE	38	AIR LEVEL SWITCH TO 5V4-10-C-6T-12DG
30	YELLOW	42	
SPACE-CONTROL PANEL TO DISTAL BUTTON PANEL	31	WHITE	43
	32	RED	44
	33	BROWN	47
	34	BLUE	48
35			
36			
37			

65" AIR HEAD MACHINE

PLUG #2

PIN 1	BROWN	153	LEFT PRIMARY REVERSE	
2	ORANGE	154	RIGHT PRIMARY REVERSE	
3	BLACK	059	PARK SWITCH TO (4LS)/(15LS) RED 0015 TO SMR TO SV4-0	
4	RED/ORANGE	23	HYDRAULIC OIL TEMPERATURE SENSOR TO CAB	YELLOW 752
5	RED/BLACK	07	TACHOMETER SENSOR TO CAB	DARK GREEN 602
6	GREEN	155	SECONDARY/DEVINER REVERSE	
7	BROWN	54	RIGHT TURN SIGNAL	
8	YELLOW	53	LEFT TURN SIGNAL	
9	BROWN	06	BACK UP LIGHT SWITCH TO RELAY	
10	BLUE	036	RIGHT WORK LIGHT SWITCH TO RELAY	
11	BLACK	034	LEFT WORK LIGHT SWITCH TO RELAY	
12	BLACK	01	4X4 SWITCH TO RELAY	
13	BLACK/RED	012	2-SPEED SWITCH TO SOLENOID	
14	BROWN/BLUE	021	TRASH FAN SWITCH TO SOLENOID	
15	BROWN/BLACK	011	PRIMARY SWITCH TO SOLENOID	
16	YELLOW	05	SIDE CONVEYOR SWITCH TO SOLENOID	
17	BROWN/RED	016	CROSS CONVEYOR SWITCH TO SOLENOID	
18	RED	82	SECONDARY CONVEYOR SWITCH TO SOLENOID	
19				
20	YELLOW/RED	15	FAN HIGH PRESSURE FILTER #3 TO LIGHT	
21	BLUE	03	GROUND DRIVE HIGH PRESSURE FILTER #3 TO LIGHT	
22	YELLOW/BLUE	020	HYDRAULIC LEVEL SENSOR TO CAB (BZL-12)	
23	WHITE	61	CROSS CONVEYOR PRESSURE SWITCH N.O. TO CAB (BZ6562)	
24	BLACK/ORANGE	022	SORT CONVEYOR SWITCH TO SOLENOID	
25	ORANGE	143	CB7 TO HYDRO NEUTRAL SWITCH #1	
26	ORANGE	144	HYDRO NEUTRAL SWITCH #2 TO PANEL RELAY	
27	PURPLE	094	ROAD LIGHT SWITCH TO RELAY	
28	GREEN	607	DTS-0160 TO CAB SPEEDOMETER	GREEN 607
29	RED	149	SECONDARY SPEED ACTUATOR	
30	YELLOW	150	SECONDARY SPEED ACTUATOR	
31	ORANGE	145	RIGHT PRIMARY PUMP ACTUATOR	
32	BLUE	146	RIGHT PRIMARY PUMP ACTUATOR	
33	ORANGE	147	HUMP SHAFT ACTUATOR	
34	BLUE	148	HUMP SHAFT ACTUATOR	
35	BLACK	151	LEFT PRIMARY PUMP ACTUATOR	
36	BROWN	123	TEMPERATURE SENSOR DTS-0198 TO CAB (BZL-12)	GREEN 425
37	RED	152	LEFT PRIMARY PUMP ACTUATOR	

PLUG 3 LARGE 16 PIN

AN *	1	18	RED	CB 6 TO WIPER	
	2	12	RED	CB 6 TO RADIO	
	3	705	PURPLE	OIL PRESSURE SENDER TO GAUGE	ORANGE/RED 14
	4	20	BLACK	GROUND	
	5	503	BROWN	LIGHT SWITCH ROAD POSITION TO RELAY # 5-86	
	6	22	RED	CB 8 TO DOME-PANEL LIGHT SWITCH - RADIO MEMORY (STBY HOT SIDE)	
*	7	507	BROWN	CAB FIELD LIGHT RELAY TO CAB FIELD LIGHTS # 4-30	
	8	755	YELLOW	HYDRAULIC OIL TANK TEMPERATURE SENSOR TO WARNING LIGHT	
	9	924	ORANGE	OL PRESSURE SENSOR TO LIGHT	ORANGE/BLUE 19
*	10	526	BROWN	CAB ROAD LIGHT RELAY TO CAB LIGHTS # 5-30	
	11	652	BLUE	FUEL TANK SENDER TO GAUGE	WHITE 58
	12	653	BLUE	COOLANT TEMPERATURE SENSOR TO LIGHT	ORANGE/BLACK 9
	13	617	GREEN	COOLANT TEMPERATURE SENDER TO GAUGE	ORANGE 4
	14	504	BROWN	CAB FIELD LIGHT POSITION TO RELAY # 4-86	
*	15	156	BLACK	CB 15 TO AUXILIARY OUTLET BOX 126A	
	16				

65" AIR HEAD
EXTRA BLADE CONTROLS

2/3/00

PLUG #4

PIN	1	RED	21	CB7 TO PIN 4 ON GAUGE PANEL		
SW 1	2	BLACK	BLACK	OUTER BOOM	ORANGE	110
	3	RED	RED	OUTER BOOM	BLUE	111
	4	ORANGE	ORANGE	BOOM LIFT	WHITE	112
	5	BLUE	BLUE	BOOM LIFT	BROWN	113
	6	BLACK/WHITE	YELLOW	BOOM SWING	PURPLE	114
	7	RED/WHITE	BROWN	BOOM SWING	GREEN	115
	8	BLUE/WHITE	VIOLET	BLADE	RED	118
	9	GREEN/WHITE	GRAY	BLADE	BLACK	119
	10	ORANGE/BLACK	WHITE/BROWN	LEFT BLADE	ORANGE	29
	11	BLUE/BLACK	WHITE/BLACK	LEFT BLADE	BLUE	30
	12	RED/BLACK	WHITE/RED	RIGHT BLADE	WHITE	35
	13	GREEN/BLACK	WHITE/YELLOW	RIGHT BLADE	BROWN	37
	14	BLUE	55	LEFT CRAB FOOT SWITCH TO STEERING BOX RELAY		
	15	GREEN	605	AIR HEAD FAN SPEED SENSOR		
	16	ORANGE	56	RIGHT CRAB FOOT SWITCH TO STEERING BOX RELAY		

PLUG #5	COLUMN PLUG			
PIN 1	11	RED	STBY HOT SIDE TERMINAL	
2				
3	13	RED	STBY IGNITION TERMINAL'S	
4	502	BROWN	POWER FROM TURN SIGNAL STAT	502 TO 507
5	104	WHITE	TO RELAY 8-30	
14	059	BLACK	TO CLUTCH SWITCH BACK TO 15(5)	
15	0015	RED	TO SMK SWITCH - COM - N.O. ON SMK RED 15 TO SV45 SOLNOIAS	
18	522	BROWN	RIGHT TURN SIGNAL	BROWN 54 ON MACHINE 512 TO 522
20	523	YELLOW	LEFT TURN SIGNAL	YELLOW 53 ON MACHINE 513 TO 523

GAUGE PANEL

PIN 1	OIL PRESSURE GAUGE	PURPLE 705 TO ORANGE/RED 14
2	GROUND	BLACK TO CAB GROUND
3	INTERNAL LAMAS	BROWN 526 PRE 1998 - 503-1998
4	IGNITION & BATTERY	RED 21 TO FUSE #7
5	TEMPERATURE GAUGE	GREEN 617 TO ORANGE 4
6	FUEL GAUGE	BLUE 652 TO WHITE 58
7		
8		
* 9	WATER TEMPERATURE LIGHT	BLUE 653 TO ORANGE/BLACK 9
* 10	OIL PRESSURE LIGHT	ORANGE 924 TO ORANGE/BLUE 19

* 9 TO BZ6562 BLUE 653 SENSOR LIGHT - 12VDC RED 21

* 10 TO BZ6562 ORANGE 924 SENSOR LIGHT - 12VDC RED 21

BLACK	1	✓ 4X4 TO RELAY	PANEL
	12	RED 2-SPEED TO CAB	13(2)
	17	BLUE BRAKE TO BRAKE SOLENOID	9(U)
	22	ORANGE SORTING CONVEYOR SOLENOID	24(2)
RED	2	✓ TO RELAY TO SOLENOID	PANEL
	7	BLACK TACHOMETER SENSOR TO CAB	5(2)
	18	BLUE TACHOMETER SENSOR TO GROUND	PANEL
	23	ORANGE HYDRAULIC OIL TEMPERATURE SENSOR TO CAB	4(2)
BLUE	3	✓ GROUND DRIVE FILTER #3 TO CAB	21(2)
	8	BLACK GROUND DRIVE FILTER #1 TO PANEL #4 C.B.	PANEL
	13	RED STEEL LIGHT MNSIDE TO FUEL SHUTOFF SOLENOID	PANEL
	24	ORANGE A/C PLUG (ORANGE 94D) TO A/C CLUTCH	
ORANGE	4	✓ WATER TEMPERATURE SENDER TO GAUGE	13(3)
	9	BLACK WATER TEMPERATURE SENSOR TO LIGHT	12(3)
	14	RED ENGINE OIL PRESSURE SENDER TO GAUGE	3(3)
	19	BLUE ENGINE OIL PRESSURE SENSOR TO LIGHT	9(3)
YELLOW	5	✓ SIDE CONVEYOR SOLENOID	16(2)
	10	BLACK FAN FILTER #1 TO PANEL #4 C.B.	PANEL
	15	RED FAN FILTER #3 TO CAB	20(2)
	20	BLUE HYDRAULIC OIL LEVEL SENSOR TO CAB	22(2)
	25	ORANGE HYDRAULIC OIL LEVEL SENSOR TO PANEL #4 C.B.	PANEL
BROWN	6	✓ BACK UP LIGHTS	PANEL
	11	BLACK PRIMARY CONVEYOR SOLENOID	15(2)
	16	RED CROSS CONVEYOR SOLENOID	17(2)
	21	BLUE TRASH FAN SWITCH TO SOLENOID	14(2)

DTS-0373B

1	12VDC
2	$\frac{1}{2}$

TEMPERATURE SWITCH

1	12VDC
2	N.C.
3	N.O.

DTS-0180C

1	12VDC
2	$\frac{1}{2}$

BRAKE PRESSURE SWITCH

1	12VDC
3	N.O.

FAIRY FILTER

1	12VDC
2	N.C.
3	N.O.

OUT	DTS-0160	IN
GREEN 607	INPUT PULSE	BLACK
RED 634	12VDC	BROWN
GREEN	GROUND	BLUE

SPEED CONTROLS

PRIMARY

LEFT RIGHT SAC SIDE VIB

VINE BAY

RAISE UP

REVERSE DOWN

AIR HEAD CLEAN

MANUAL MODE

AUTOMATIC

CONVEYOR CIRCUITS

MASTER PRIM SAC CROSS SIDE SORT TRASH

STONER

LOWERS

RAISE

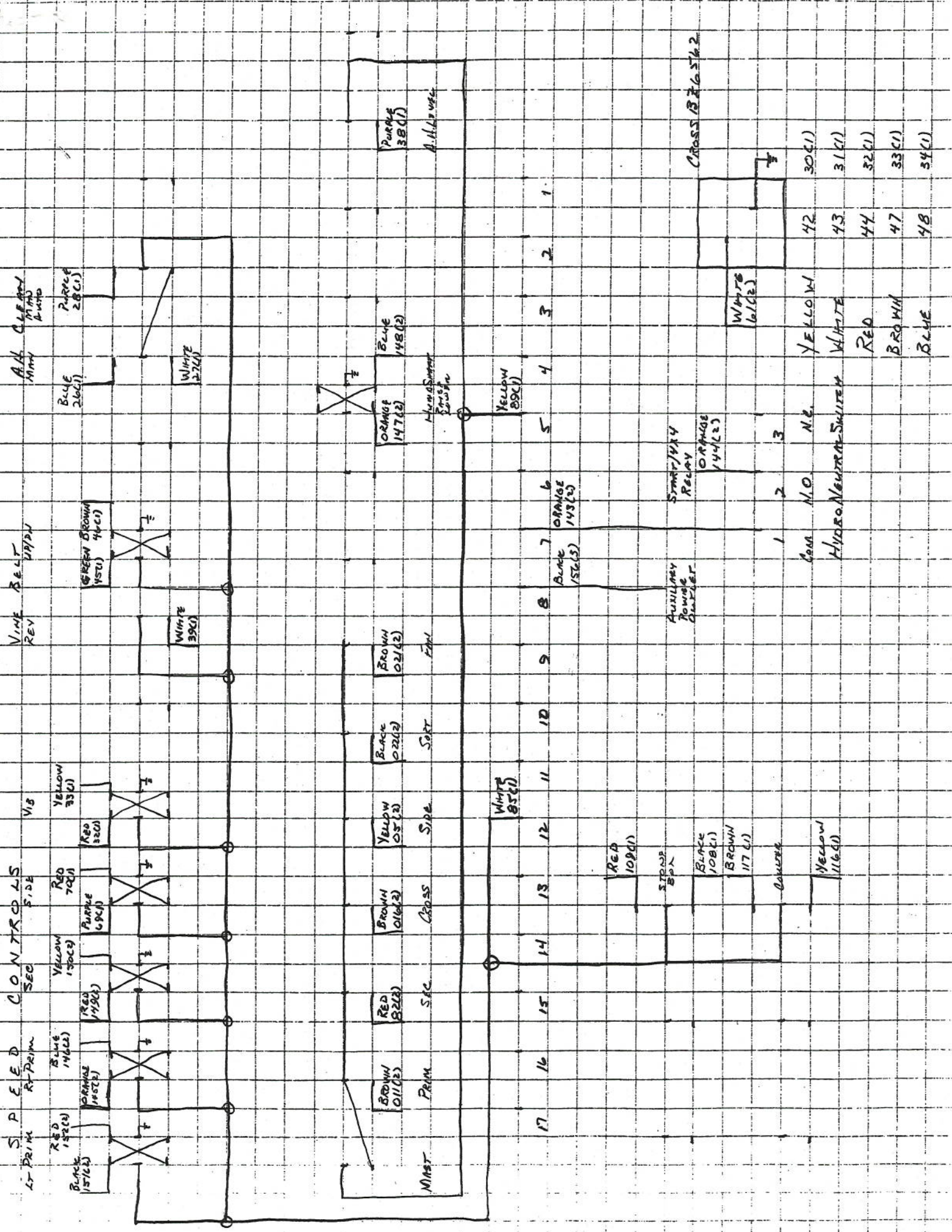
LOWER

HUNG SHAF

AIR LEVEL

CHUTE BOOK LIFT SWING BUSH

LEFT BONE RIGHT BONE



S P E E D
 LT PRIM 157(2) BLUE 146(2) RED 149(2) YELLOW 150(2) RED 70(1) RED 32(1) YELLOW 33(1)
 R-PRIM 145(2) BROWN 148(2) PURPLE 69(1) RED 32(1) WHITE 39(1) GREEN BROWN 44(1) BLUE 26(1) PURPLE 28(1) WHITE 27(1)

V I B
 V I N E B E L T
 REV W/P/D
 WHITE 39(1) GREEN BROWN 44(1)

A H C L E A R
 M/N PUMP
 BLUE 148(2) PURPLE 28(1)

M I N I S T
 BROWN 011(2) RED 82(2) BROWN 016(2) YELLOW 05(2) BLACK 022(2) BROWN 021(2) ORANGE 147(2) BLUE 148(2) PURPLE 38(1)

1
 2
 3
 4
 5
 6
 7
 8
 9
 10
 11
 12
 13
 14
 15
 16
 17

WHITE 85(1)
 YELLOW 89(1)
 BLUE 156(3)
 ORANGE 143(2)
 RED 109(1)

AUXILIARY POWER OUTLET
 START/STOP RELAY
 ORANGE 144(2)

CROSS 1376562
 WHITE 61(2)

1	2	3	42	30(1)
COIL N.O.	N.C.	YELLOW	43	31(1)
HYDRO NEUTRAL SWITCH	WHITE	RED	44	32(1)
	BROWN	BROWN	47	33(1)
	BLUE	BLUE	48	34(1)

H/RANGE

+

LOW RANGE

+

+

A.H. FAN

GROUND DRIVE

TEST SWITCHES

4/4

GROUND DRIVE

+

+

+

4/2

+

FUEL PUMP

+

LEFT

+

RIGHT

FLASHERS

+

WORK LIGHTS

PARASOL
ISLAND

+

OFF

RAM

+

BACKUP

+

+

+

A.H. FAN

+

FILTER/WASH

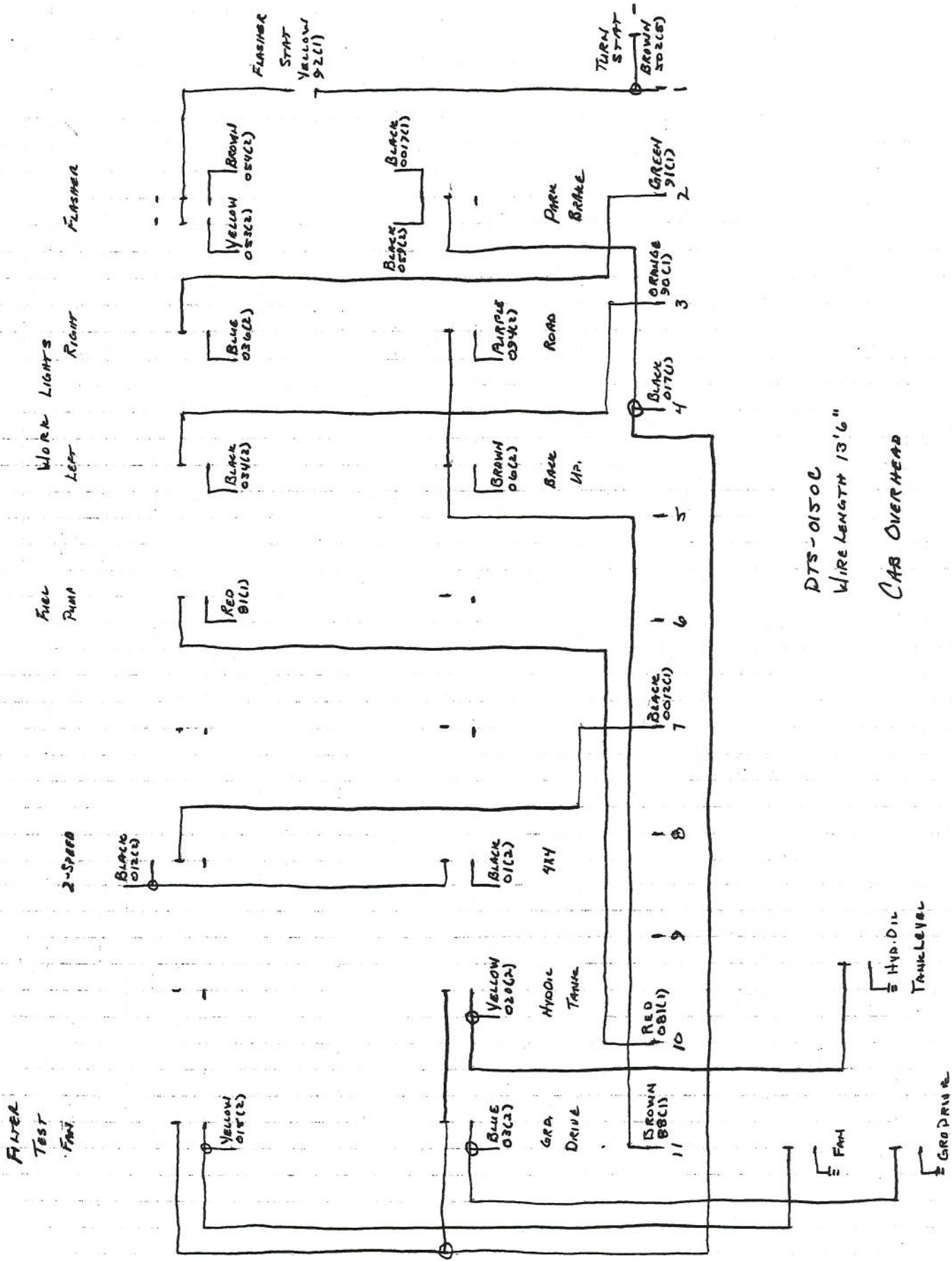
+

LOW

HYDRAULIC OIL

+

GROUND DRIVE



DTS-0150C
 WIRE LENGTH 13'6"
 CAB OVERHEAD

8/30/00

30A	13	A/C
30A	12	ALTERNATOR BACKUP LIGHTS SWITCH RELAY'S
30A	11	VEHICLE LIGHTS SWITCH RELAY'S
20A	10	FUEL PUMP
30A	9	CAB FIELD LIGHTS RELAY
20A	8	CAB OVERHEADS HEADS AUXILIARY OUTLET
20A	7	CYRINDERS 2-SPEED 4X4
30A	6	RADIO WIPER
20A	5	CHANDLERS PARK DIS-DIOL
30A	4	LEFT WORK LIGHT SWITCH
30A	3	RIGHT WORK LIGHT SWITCH
20A	2	HORN TURN LIGHT
30A	1	HORN

21	20	SIDE LIGHT RELAY
18	19	SPRT / CROSS LIGHT RELAY
17	18	CAB RAMP LIGHT RELAY
16	17	STEERING REVERSING VALVES
15	16	SPRT / REVERSING VALVES LIGHT RELAY
14	15	BOOM LIGHTS RELAY