

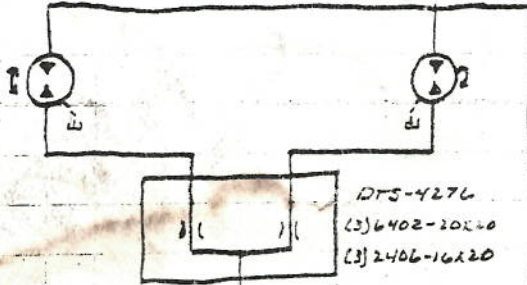
#02205

2002 DTS-0150C GROUND DRIVE

7/2/02
#02205

M518-B-121-A18-1120-50

- (2) 71437800
- (2) 7400-72X22
- (4) 12PH
- (4) 685F-12X12
- (2) 25374.15H



DTS-0150C

- M550-26-21-F50-1120
6243769 F (H. Spool)
3043701V (Sensor)
- (2) CR 4475B.12
 - (1) 0000000.11
 - (2) 637F-16X16

- M550-20-21-F50-1120-2000
3243759H
- (2) CR 4475B.12
 - (1) 0000000.11
 - (2) 637F-16X16

BRAKE

BRAKE

2-SPEED

2-SPEED

C.D.

SMX-LC-200R/H

H.O.S.

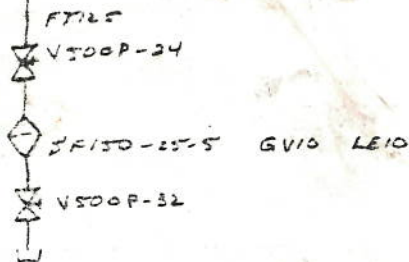
BRAKE CHARGE PRESSURE
FROM DTS-0155B

(2) 5V9-10-D-6T-12AG

(2) 372A-9T50-SL23

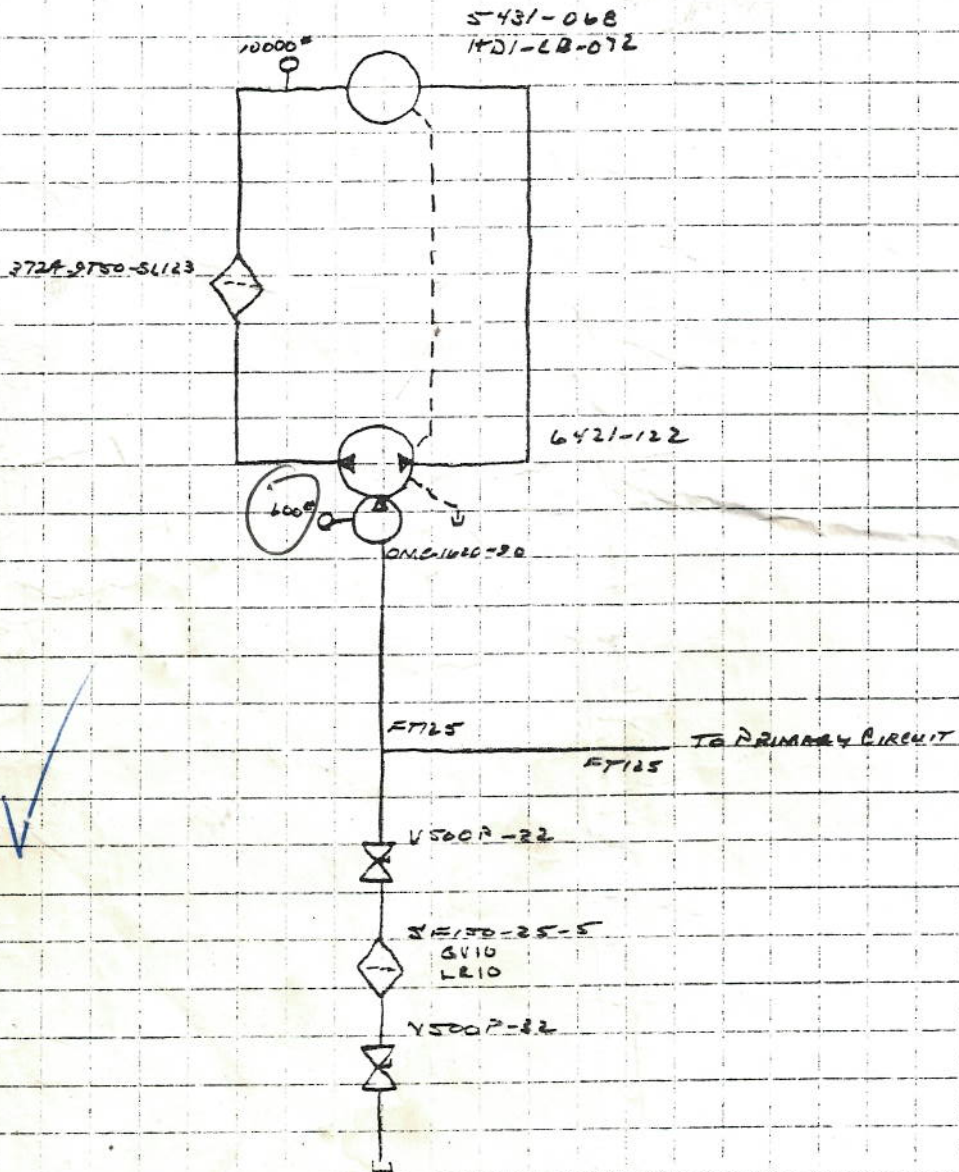
XPS

DTS 4285
TANDEM 64



2007 50" AIR HEAD

65" AIR HEAD

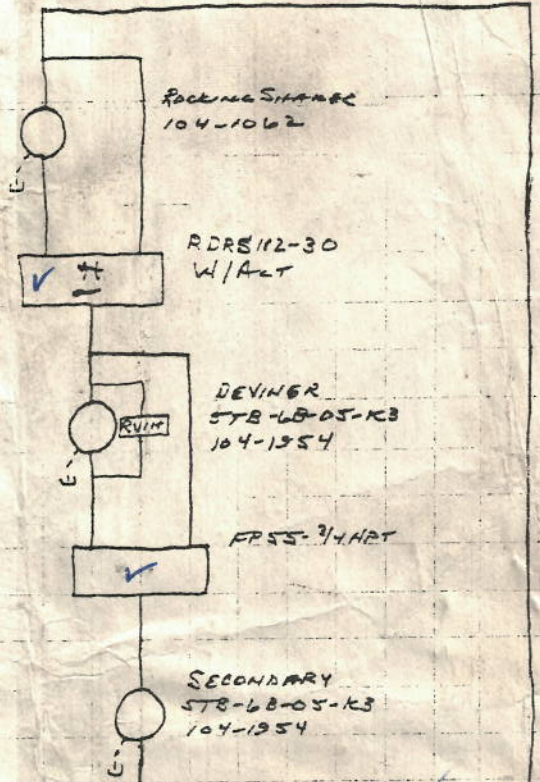


7/3/02

2002 PRIMARY / SECONDARY CIRCUITS

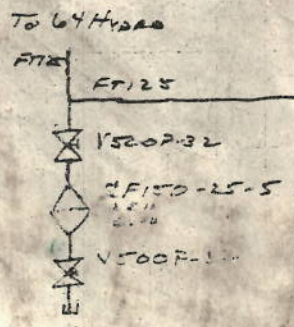
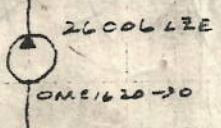
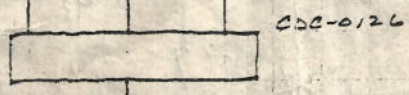
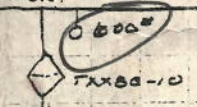
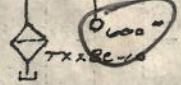
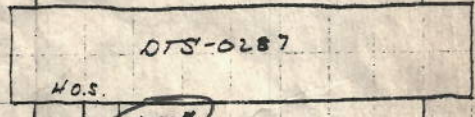
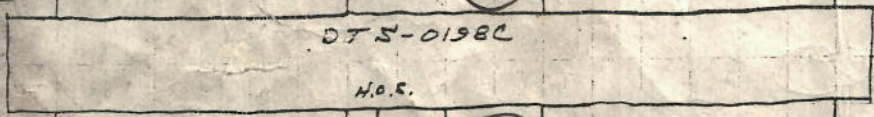
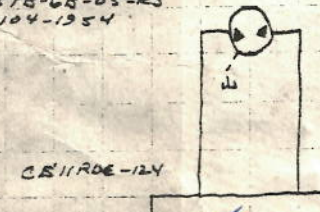
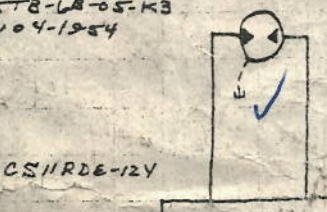
RIGHT PRIMARY
578-68-05-K3
104-1954

LEFT PRIMARY
578-68-05-K3
104-1954



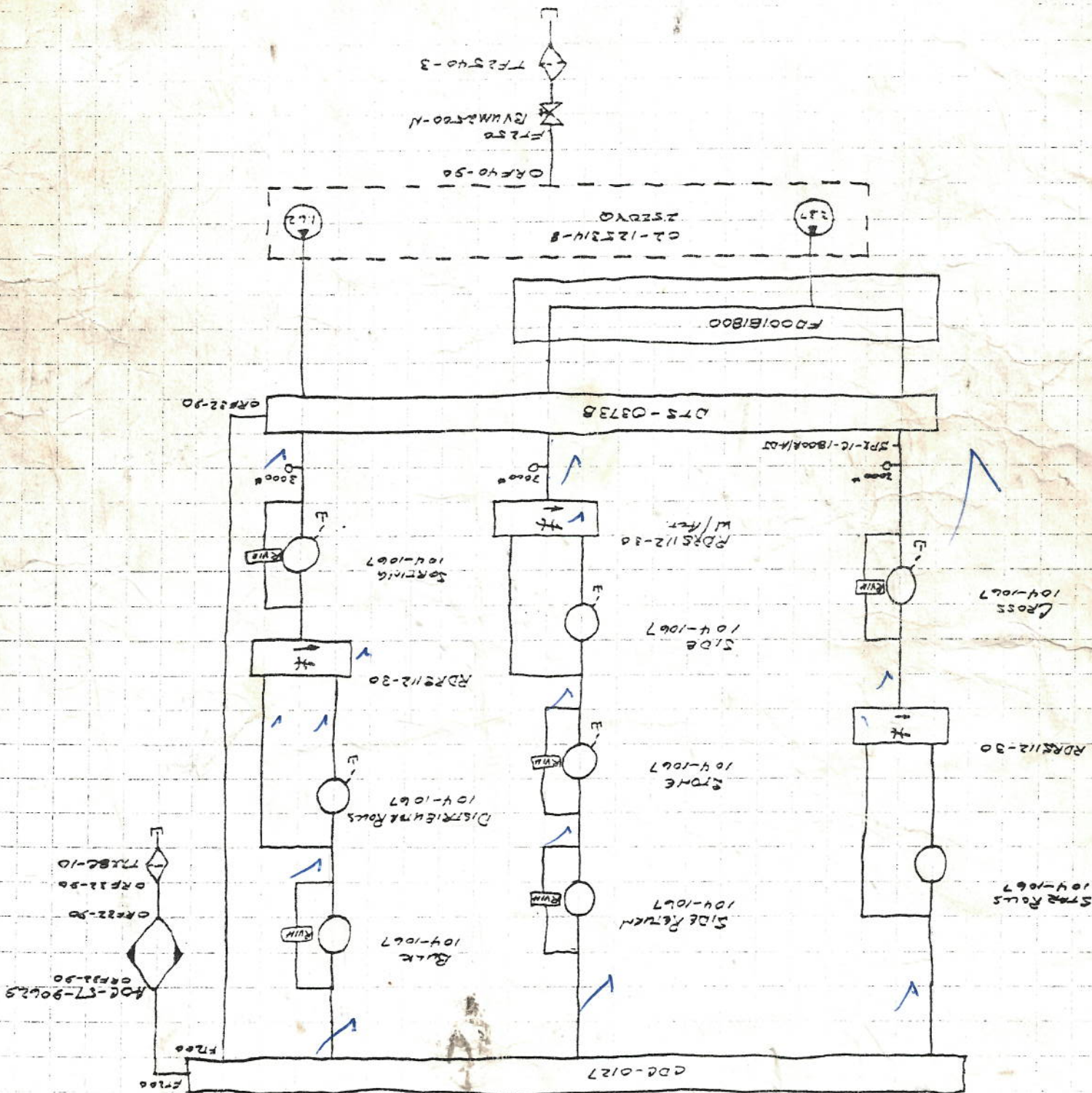
CS11RDE-124

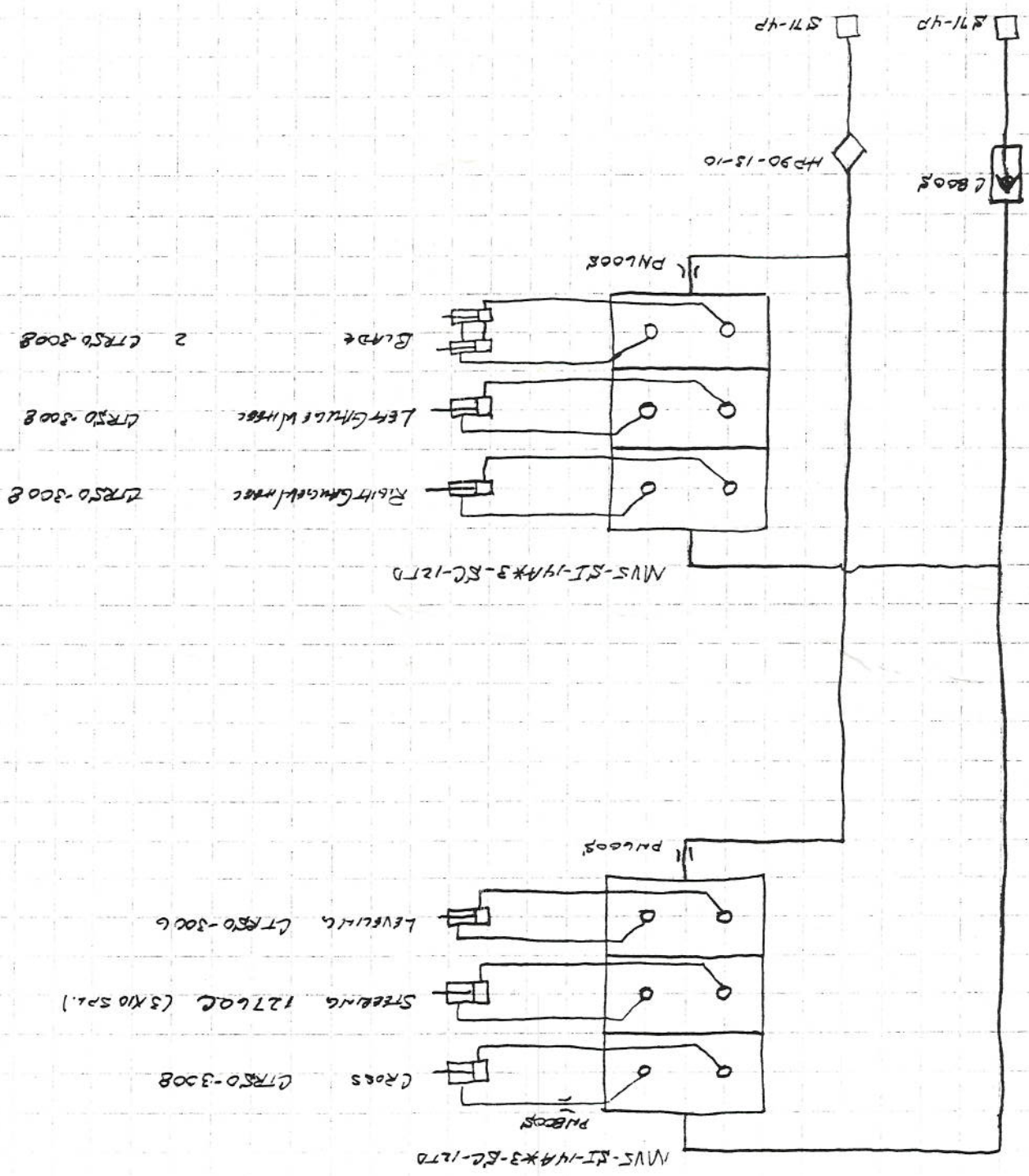
CS11RDE-124



2002 Cross - Side - Forming Circuits

7/3/02





2002 - 6 RPTV / HAVE BAKK CIRCUIT

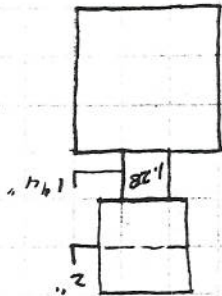
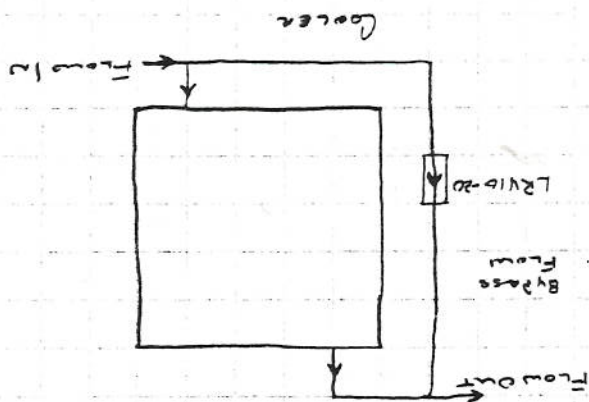
11/20/02
 GRTV
 402207
 SUMMIT FIELDS

11/20/02
 6 RPTV
 602207
 Summit Funks

2002 PTV - HYDRAULIC DiTAK

- ③
- T2030-3
- 2" C.S. NIP
- V500P-32
- FT200
- * V2020

- ②
- 2" X 1 1/4" BUSH
- 1 1/4" C.S. NIP
- V500P-20
- 1 1/4" C.S. NIP
- SF120-25-5
- FT1215
- * 4L Hydro LHC.



V2020-1F115115-11DD-30 R.H.

4L Hydro/IPDR 4000 #11.28 BUSH LHC. / C.W. / Elec. Control. / 1 1/4" - 1 1/4" /
 Aux B-Pad / INTERNAT H.O.S. /
 New Model

DUST GEN BOX
 1101-CR-064

2002 Pull Winch Review Cooler Hydraulic Pumps

